

# STOML2 Recombinant Mouse mAb

STOML2 Recombinant Mouse mAb

Catalog # AP94491

## Product Information

---

<b>Application</b>	WB, IF, ICC
<b>Host</b>	Rabbit
<b>Clonality</b>	Recombinant
<b>Physical State</b>	Liquid
<b>Isotype</b>	IgG2b/Kappa
<b>Purity</b>	affinity purified by Protein G
<b>Buffer</b>	0.01M TBS (pH7.4) with 1% BSA, 0.02% Proclin300 and 50% Glycerol.
<b>SUBCELLULAR LOCATION</b>	Membrane; peripheral membrane protein. Cytoplasm. Associated with the cytoskeleton.
<b>SIMILARITY</b>	Belongs to the band 7/mec-2 family.
<b>Important Note</b>	This product as supplied is intended for research use only, not for use in human, therapeutic or diagnostic applications.
<b>Background Descriptions</b>	STOML2 is a 356 amino acid member of the mec-2 family of proteins. Expressed ubiquitously at low levels, STOML2 is highly expressed in heart, liver and pancreas. STOML2 is localized to the cytoplasm with some distribution on the membrane. STOML2 was first identified as an overexpressed protein in human endometrial adenocarcinoma. Changes in cell growth in samples with different levels of STOML2 indicate that STOML2 could play a role in endometrial tumorigenesis. STOML2 is also thought to play a role in regulating ion channel conductances or the organization of sphingolipid and cholesterol-rich lipid rafts.

## Additional Information

---

<b>Target/Specificity</b>	Ubiquitously expressed at low levels.
<b>Dilution</b>	WB=1:1000-1:10000, ICC/IF=1:50
<b>Format</b>	0.01M TBS(pH7.4) with 1% BSA, 0.09% (W/V) sodium azide and 50% Glyce
<b>Storage</b>	Store at -20 °C for one year. Avoid repeated freeze/thaw cycles. When reconstituted in sterile pH 7.4 0.01M PBS or diluent of antibody the antibody is stable for at least two weeks at 2-4 °C.

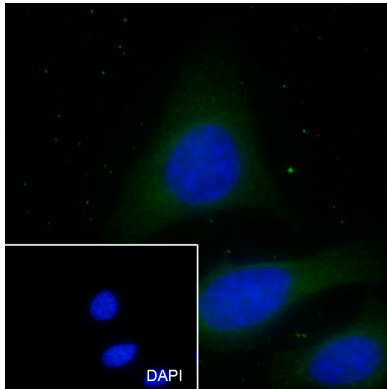
## Background

---

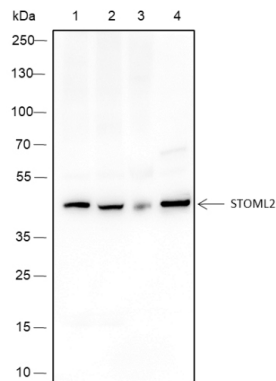
This product as supplied is intended for research use only, not for use in human, therapeutic or diagnostic applications.

## Images

---



Cell line: HeLa Fixative: 100% Ice-cold methanol  
 Permeabilization: 0.1% TritonX-100 Primary Ab dilution:  
 1:50 Primary incubation condition: 4°C overnight  
 Secondary Ab: Goat Anti-Mouse IgG Nuclear counter  
 stain: DAPI (Blue) Comment: Color green is the positive  
 signal for AP94491



Blocking buffer: 5% NFDM/TBST Primary Ab dilution:  
 1:10000 Primary Ab incubation condition: 2 hours at  
 room temperature Secondary Ab: Goat Anti-Mouse IgG  
 H&L (HRP) Lysate: 1: JK, 2: MCF-7, 3: Rat Brain, 4: N2a  
 Protein loading quantity: 20 µg Exposure time: 3 s  
 Predicted MW: 39 kDa Observed MW: 39 kDa

Please note: All products are 'FOR RESEARCH USE ONLY. NOT FOR USE IN DIAGNOSTIC OR THERAPEUTIC PROCEDURES'.