

PDP1 Recombinant Rabbit mAb

PDP1 Recombinant Rabbit mAb

Catalog # AP94486

Product Information

| | |
|--------------------------------|---|
| Application | WB, IF, ICC |
| Host | Rabbit |
| Clonality | Recombinant |
| Physical State | Liquid |
| Isotype | IgG/Kappa |
| Purity | affinity purified by Protein A |
| Buffer | 0.01M TBS (pH7.4) with 1% BSA, 0.02% Proclin300 and 50% Glycerol. |
| SUBCELLULAR LOCATION | Mitochondrion matrix (By similarity). |
| SIMILARITY | Belongs to the PP2C family. |
| SUBUNIT | Heterodimer of a catalytic (PDP1) and a regulatory (PDPR) subunit (By similarity). |
| DISEASE | Defects in PDP1 are the cause of pyruvate dehydrogenase phosphatase deficiency (PDP deficiency) [MIM:608782]. PDP deficiency results in lactic acidosis leading to neurological dysfunction. |
| Important Note | This product as supplied is intended for research use only, not for use in human, therapeutic or diagnostic applications. |
| Background Descriptions | PPM2C is a protein similar to members of the protein phosphatase 2C (PP2C) family. It is a catalytic subunit of the mitochondrial matrix phosphatase and is involved in reactivation of the pyruvate dehydrogenase complex. |

Additional Information

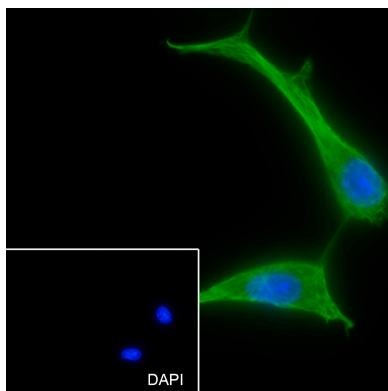
| | |
|-----------------|---|
| Dilution | WB=1:500-1:1000, ICC/IF=1:50 |
| Format | 0.01M TBS(pH7.4) with 1% BSA, 0.09% (W/V) sodium azide and 50% Glyce |
| Storage | Store at -20 °C for one year. Avoid repeated freeze/thaw cycles. When reconstituted in sterile pH 7.4 0.01M PBS or diluent of antibody the antibody is stable for at least two weeks at 2-4 °C. |

Background

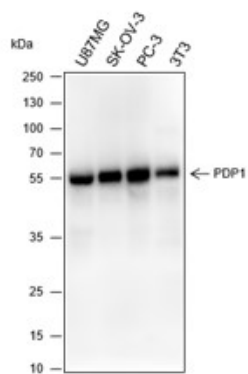
This product as supplied is intended for research use only, not for use in human, therapeutic or diagnostic applications.

Images

Cell line: U87-MG Fixative: 100% Ice-cold methanol
Permeabilization: 0.1% TritonX-100 Primary ab dilution:



1:50 Primary incubation condition: 4°C overnight
 Secondary ab: Goat Anti-Rabbit IgG Nuclear counter
 stain: DAPI (Blue) Comment: Color green is the positive
 signal for AP94486



Blocking buffer: 5% NFDM/TBST Primary ab dilution:
 1:1000 Primary ab incubation condition: 2 hours at room
 temperature Secondary ab: Goat Anti-Rabbit IgG H&L
 (HRP) Lysate: U87MG, SK-OV-3, PC-3, 3T3 Protein loading
 quantity: 20 µg Exposure time: 60 s Predicted MW: 55 kDa
 Observed MW: 55 kDa

Please note: All products are 'FOR RESEARCH USE ONLY. NOT FOR USE IN DIAGNOSTIC OR THERAPEUTIC PROCEDURES'.