

C5ORF42 Rabbit pAb

C5ORF42 Rabbit pAb

Catalog # AP94482

Product Information

Primary Accession	Q9H799
Reactivity	Human
Host	Rabbit
Clonality	Polyclonal
Calculated MW	361746
Physical State	Liquid
Immunogen	KLH conjugated synthetic peptide derived from human C5ORF42
Epitope Specificity	1-100/3197
Isotype	IgG
Purity	affinity purified by Protein A
Buffer	0.01M TBS (pH7.4) with 1% BSA, 0.02% Proclin300 and 50% Glycerol.
SUBCELLULAR LOCATION	Membrane; Multi-pass membrane protein (Potential).
DISEASE	Defects in C5orf42 are the cause of Joubert syndrome type 17 (JBTS17) [MIM:614615]. A disorder presenting with cerebellar ataxia, oculomotor apraxia, hypotonia, neonatal breathing abnormalities and psychomotor delay. Neuroradiologically, it is characterized by cerebellar vermian hypoplasia/aplasia, thickened and reoriented superior cerebellar peduncles, and an abnormally large interpeduncular fossa, giving the appearance of a molar tooth on transaxial slices (molar tooth sign). Additional variable features include retinal dystrophy and renal disease.
Important Note	This product as supplied is intended for research use only, not for use in human, therapeutic or diagnostic applications.

Additional Information

Gene ID	65250
Other Names	Ciliogenesis and planar polarity effector 1, Protein JBTS17, CPLANE1 (HGNC:25801)
Dilution	Flow-Cyt=1 µg/Test
Format	0.01M TBS(pH7.4) with 1% BSA, 0.09% (W/V) sodium azide and 50% Glyce
Storage	Store at -20 °C for one year. Avoid repeated freeze/thaw cycles. When reconstituted in sterile pH 7.4 0.01M PBS or diluent of antibody the antibody is stable for at least two weeks at 2-4 °C.

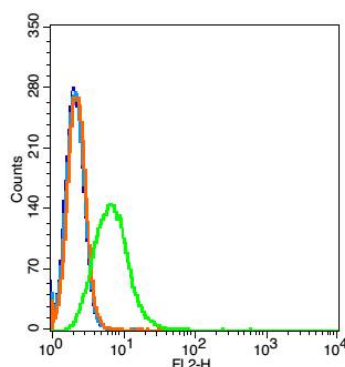
Protein Information

Name	CPLANE1 (HGNC:25801)
Function	Involved in ciliogenesis (PubMed: 25877302 , PubMed: 35582950). Involved in the establishment of cell polarity required for directional cell migration. Proposed to act in association with the CPLANE (ciliogenesis and planar polarity effectors) complex. Involved in recruitment of peripheral IFT-A proteins to basal bodies (By similarity).
Cellular Location	Membrane; Multi-pass membrane protein. Cell projection, cilium {ECO:0000250 UniProtKB:Q8CE72}. Note=Localizes to the ciliary transition zone. {ECO:0000250 UniProtKB:Q8CE72}

Background

This product as supplied is intended for research use only, not for use in human, therapeutic or diagnostic applications.

Images



Blank control: Hela(blue), the cells were fixed with 2% paraformaldehyde (10 min) and then permeabilized with ice-cold 90% methanol for 30 min on ice. Isotype Control Antibody: Rabbit IgG(orange) ; Secondary Antibody: Goat anti-rabbit IgG-PE(white blue), Dilution: 1:200 in 1 X PBS containing 0.5% BSA ; Primary Antibody Dilution: 1 µg in 100 µL 1X PBS containing 0.5% BSA(green).

Please note: All products are 'FOR RESEARCH USE ONLY. NOT FOR USE IN DIAGNOSTIC OR THERAPEUTIC PROCEDURES'.