

MPXV A35R Rabbit pAb

MPXV A35R Rabbit pAb

Catalog # AP94481

Product Information

Application	E
Host	Rabbit
Clonality	Polyclonal
Calculated MW	20 KDa
Physical State	Liquid
Immunogen	Recombinant MPXV A35R protein
Epitope Specificity	58-181/181
Isotype	IgG
Purity	affinity purified by Protein A
Buffer	0.01M TBS (pH7.4) with 1% BSA, 0.02% Proclin300 and 50% Glycerol.
Important Note	This product as supplied is intended for research use only, not for use in human, therapeutic or diagnostic applications.
Background Descriptions	Monkeypox is a rare zoonosis caused by monkeypox virus, which has become the most serious orthpoxvirus and consists of complex double stranded DNA. The cases are mostly in central and western Africa. The pathogenesis of monkeypox is that the virus invades the body from respiratory mucosa , multiplies in lymphocytes, and incurs into blood producing transient venereal toxemia. after the virus multiplies in cells, the cells can invade the blood and propagate to the skin of the whole body, causing lesions.

Additional Information

Dilution	ELISA=1:5000-10000
Format	0.01M TBS(pH7.4) with 1% BSA, 0.09% (W/V) sodium azide and 50% Glyce
Storage	Store at -20 °C for one year. Avoid repeated freeze/thaw cycles. When reconstituted in sterile pH 7.4 0.01M PBS or diluent of antibody the antibody is stable for at least two weeks at 2-4 °C.

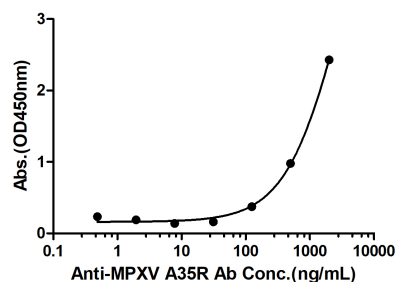
Background

This product as supplied is intended for research use only, not for use in human, therapeutic or diagnostic applications.

Images

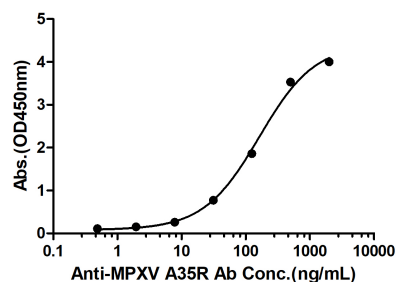
Measured by its binding ability in a indirect ELISA.
Immobilized MPXV A35R protein, His Tag (Cat. bs-43539P)

Rabbit Anti-MPXV A35R Antibody Bind with MPXV A35R protein, His Tag



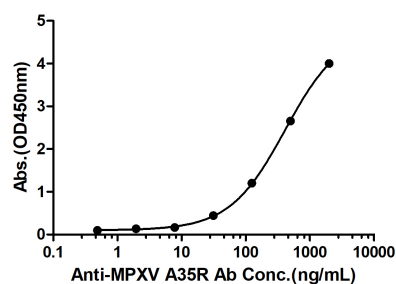
at 2 µg/mL (100 µL/well) can bind Rabbit Anti-MPXV A35R Antibody, the EC50 is 3058 ng/mL.

Rabbit Anti-MPXV A35R Antibody Bind with MPXV A35R protein, His Tag



Measured by its binding ability in a indirect ELISA. Immobilized MPXV A35R protein, His Tag (Cat. bs-43539P) at 2 µg/mL (100 µL/well) can bind Rabbit Anti-MPXV A35R Antibody, the EC50 is 163.3 ng/mL.

Rabbit Anti-MPXV A35R Antibody Bind with MPXV A35R protein, His Tag



Measured by its binding ability in a indirect ELISA. Immobilized MPXV A35R protein, His Tag (Cat. bs-43539P) at 2 µg/mL (100 µL/well) can bind Rabbit Anti-MPXV A35R Antibody, the EC50 is 414.4 ng/mL.

Please note: All products are 'FOR RESEARCH USE ONLY. NOT FOR USE IN DIAGNOSTIC OR THERAPEUTIC PROCEDURES'.