

MPXV M1R Rabbit pAb

MPXV M1R Rabbit pAb

Catalog # AP94478

Product Information

Application	WB, E
Host	Rabbit
Clonality	Polyclonal
Calculated MW	27 KDa
Physical State	Liquid
Immunogen	Recombinant MPXV/M1R protein
Epitope Specificity	1-182/250
Isotype	IgG
Purity	affinity purified by Protein A
Buffer	0.01M TBS (pH7.4) with 1% BSA, 0.02% Proclin300 and 50% Glycerol.
Important Note	This product as supplied is intended for research use only, not for use in human, therapeutic or diagnostic applications.
Background Descriptions	Monkeypox is a rare zoonosis caused by monkeypox virus, which has become the most serious orthpoxvirus and consists of complex double stranded DNA. The cases are mostly in central and western Africa. The pathogenesis of monkeypox is that the virus invades the body from respiratory mucosa , multiplies in lymphocytes, and incurs into blood producing transient venereal toxemia. after the virus multiplies in cells, the cells can invade the blood and propagate to the skin of the whole body, causing lesions.

Additional Information

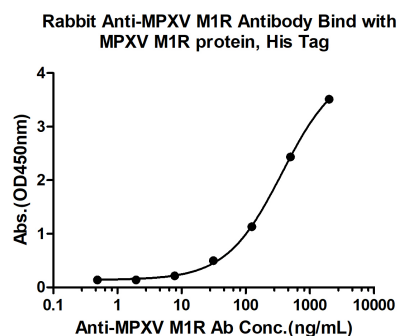
Dilution	WB=1:500-2000,ELISA=1:5000-10000
Format	0.01M TBS(pH7.4) with 1% BSA, 0.09% (W/V) sodium azide and 50% Glyce
Storage	Store at -20 °C for one year. Avoid repeated freeze/thaw cycles. When reconstituted in sterile pH 7.4 0.01M PBS or diluent of antibody the antibody is stable for at least two weeks at 2-4 °C.

Background

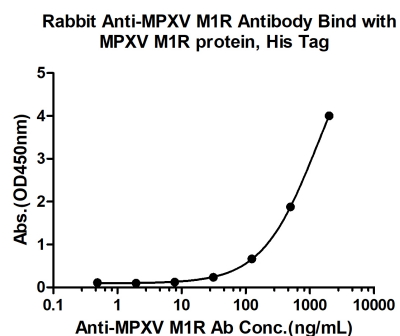
This product as supplied is intended for research use only, not for use in human, therapeutic or diagnostic applications.

Images

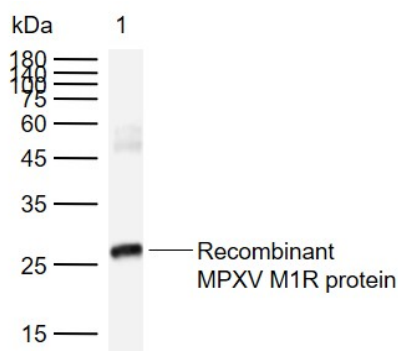
Measured by its binding ability in a indirect ELISA.
Immobilized MPXV M1R protein, His Tag (Cat. bs-42062P)



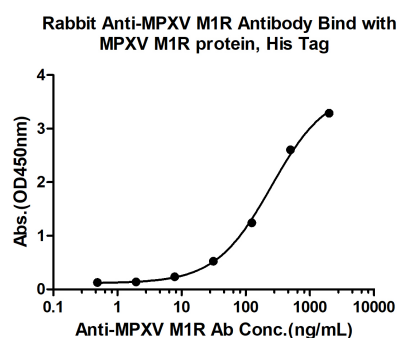
at 2 $\mu\text{g/mL}$ (100 $\mu\text{L/well}$) can bind Rabbit Anti-MPXV M1R Antibody, the EC₅₀ is 369.2 ng/mL.



Measured by its binding ability in a indirect ELISA. Immobilized MPXV M1R protein, His Tag (Cat. bs-42062P) at 2 $\mu\text{g/mL}$ (100 $\mu\text{L/well}$) can bind Rabbit Anti-MPXV M1R Antibody, the EC₅₀ is 1309 ng/mL.



Sample: Lane 1: Recombinant human VEGFR1 protein, C-His (HEK293) Primary: Anti-MPXV M1R (AP94478) at 1/1000 dilution Secondary: IRDye800CW Goat Anti-Rabbit IgG at 1/20000 dilution Predicted band size: 27 kDa Observed band size: 27 kDa



Measured by its binding ability in a indirect ELISA. Immobilized MPXV M1R protein, His Tag (Cat. bs-42062P) at 2 $\mu\text{g/mL}$ (100 $\mu\text{L/well}$) can bind Rabbit Anti-MPXV M1R Antibody, the EC₅₀ is 251.4 ng/mL.

Please note: All products are 'FOR RESEARCH USE ONLY. NOT FOR USE IN DIAGNOSTIC OR THERAPEUTIC PROCEDURES'.