

POLK Rabbit pAb

POLK Rabbit pAb
Catalog # AP94477

Product Information

Application	WB, E
Reactivity	Human
Host	Rabbit
Clonality	Polyclonal
Calculated MW	99 KDa
Physical State	Liquid
Immunogen	KLH conjugated synthetic peptide derived from human POLK
Epitope Specificity	1-100/870
Isotype	IgG
Purity	affinity purified by Protein A
Buffer	0.01M TBS (pH7.4) with 1% BSA, 0.02% Proclin300 and 50% Glycerol.
SUBCELLULAR LOCATION	Nucleus. Accumulates at replication forks after DNA damage.
SIMILARITY	Belongs to the DNA polymerase type-Y family. Contains 1 umuC domain.
SUBUNIT	Interacts with REV1 (By similarity). Interacts with PCNA.
Important Note	This product as supplied is intended for research use only, not for use in human, therapeutic or diagnostic applications.
Background Descriptions	This gene encodes a member of the DNA polymerase type-Y family of proteins. The encoded protein is a specialized DNA polymerase that catalyzes translesion DNA synthesis, which allows DNA replication in the presence of DNA lesions. Human cell lines lacking a functional copy of this gene exhibit impaired genome integrity and enhanced susceptibility to oxidative damage. Mutations in this gene that impair enzyme activity may be associated with prostate cancer in human patients. [provided by RefSeq, Sep 2016]

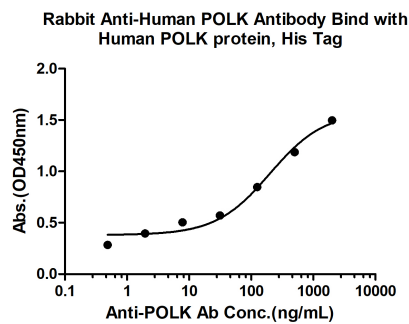
Additional Information

Target/Specificity	Detected at low levels in testis, spleen, prostate and ovary. Detected at very low levels in kidney, colon, brain, heart, liver, lung, placenta, pancreas and peripheral blood leukocytes.
Dilution	WB=1:500-2000,ELISA=1:5000-10000
Format	0.01M TBS(pH7.4) with 1% BSA, 0.09% (W/V) sodium azide and 50% Glyce
Storage	Store at -20 °C for one year. Avoid repeated freeze/thaw cycles. When reconstituted in sterile pH 7.4 0.01M PBS or diluent of antibody the antibody is stable for at least two weeks at 2-4 °C.

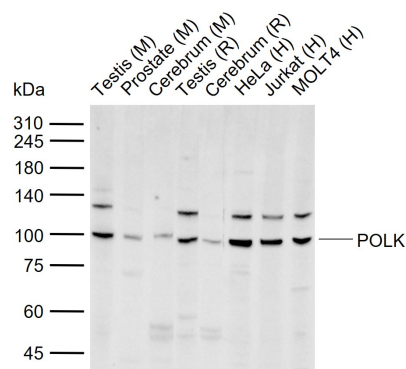
Background

This product as supplied is intended for research use only, not for use in human, therapeutic or diagnostic applications.

Images



Measured by its binding ability in a indirect ELISA. Immobilized Human POLK protein, His Tag (Cat. bs-25393P) at 2 µg/mL (100 µL/well) can bind Rabbit Anti-Human POLK Antibody, the EC50 is 199.8 ng/mL.



Sample: Lane 1: Mouse Testis tissue lysates Lane 2: Mouse Prostate tissue lysates Lane 3: Mouse Cerebrum tissue lysates Lane 4: Rat Testis tissue lysates Lane 5: Rat Cerebrum tissue lysates Lane 6: Human HeLa cell lysates Lane 7: Human Jurkat cell lysates Lane 8: Human MOLT4 cell lysates Primary: Anti-POLK (AP94477) at 1/1000 dilution Secondary: IRDye800CW Goat Anti-Rabbit IgG at 1/20000 dilution Predicted band size: 99 kDa Observed band size: 100 kDa

Please note: All products are 'FOR RESEARCH USE ONLY. NOT FOR USE IN DIAGNOSTIC OR THERAPEUTIC PROCEDURES'.