

CD86 Rabbit pAb

CD86 Rabbit pAb
Catalog # AP94474

Product Information

Application	WB, IHC-P, IHC-F, IF
Reactivity	Rat
Host	Rabbit
Clonality	Polyclonal
Calculated MW	31 KDa
Physical State	Liquid
Immunogen	KLH conjugated synthetic peptide derived from the middle of rat CD86
Epitope Specificity	140-175/313
Isotype	IgG
Purity	affinity purified by Protein A
Buffer	0.01M TBS (pH7.4) with 1% BSA, 0.02% Proclin300 and 50% Glycerol.
SUBCELLULAR LOCATION	Cell membrane; Single-pass type I membrane protein.
SIMILARITY	Contains 1 Ig-like C2-type (immunoglobulin-like) domain.Contains 1 Ig-like V-type (immunoglobulin-like) domain.
SUBUNIT	Homodimer. Interacts with MARCH8. Interacts with human herpesvirus 8 MIR2 protein (Probable). Interacts with adenovirus subgroup B fiber proteins and acts as a receptor for these viruses.
Post-translational modifications	Polyubiquitinated; which is promoted by MARCH8 and results in endocytosis and lysosomal degradation.
Important Note	This product as supplied is intended for research use only, not for use in human, therapeutic or diagnostic applications.
Background Descriptions	This gene encodes a type I membrane protein that is a member of the immunoglobulin superfamily. This protein is expressed by antigen-presenting cells, and it is the ligand for two proteins at the cell surface of T cells, CD28 antigen and cytotoxic T-lymphocyte-associated protein 4. Binding of this protein with CD28 antigen is a costimulatory signal for activation of the T-cell. Binding of this protein with cytotoxic T-lymphocyte-associated protein 4 negatively regulates T-cell activation and diminishes the immune response. Alternative splicing results in several transcript variants encoding different isoforms.[provided by RefSeq, May 2011].

Additional Information

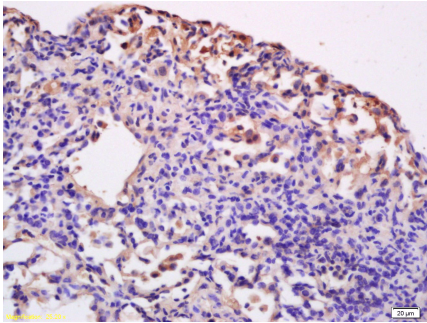
Target/Specificity	Expressed by activated B-lymphocytes and monocytes.
Dilution	WB=1:500-2000,IHC-P=1:100-500,IHC-F=1:100-500,IF=1:100-500,Flow-Cyt=2 μ g/Test
Format	0.01M TBS(pH7.4) with 1% BSA, 0.09% (W/V) sodium azide and 50% Glyce
Storage	Store at -20 °C for one year. Avoid repeated freeze/thaw cycles. When

reconstituted in sterile pH 7.4 0.01M PBS or diluent of antibody the antibody is stable for at least two weeks at 2-4 °C.

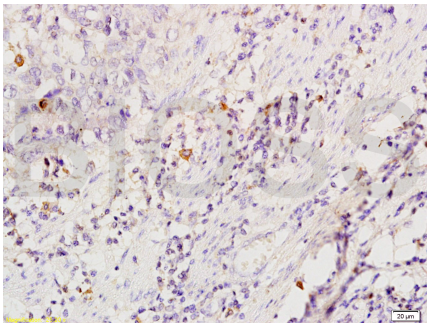
Background

This product as supplied is intended for research use only, not for use in human, therapeutic or diagnostic applications.

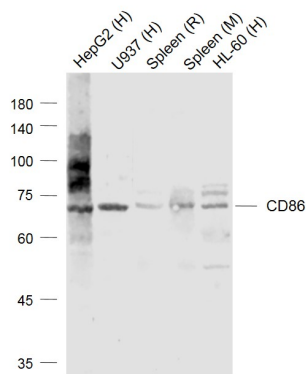
Images



Tissue/cell: rat lung tissue; 4% Paraformaldehyde-fixed and paraffin-embedded; Antigen retrieval: citrate buffer (0.01M, pH 6.0), Boiling bathing for 15min; Block endogenous peroxidase by 3% Hydrogen peroxide for 30min; Blocking buffer (normal goat serum,C-0005) at 37°C for 20 min; Incubation: Anti-CD86/B7-2 Polyclonal Antibody, Unconjugated(AP94474) 1:200, overnight at 4°C, followed by conjugation to the secondary antibody(SP-0023) and DAB(C-0010) staining



Tissue/cell: Human esophageal carcinoma; 4% Paraformaldehyde-fixed and paraffin-embedded; Antigen retrieval: citrate buffer (0.01M, pH 6.0), Boiling bathing for 15min; Block endogenous peroxidase by 3% Hydrogen peroxide for 30min; Blocking buffer (normal goat serum,C-0005) at 37°C for 20 min; Incubation: Anti-CD86/B7-2 Polyclonal Antibody, Unconjugated(AP94474) 1:200, overnight at 4°C, followed by conjugation to the secondary antibody(SP-0023) and DAB(C-0010) staining



Sample: Lane 1: HepG2 (Human) Cell Lysate at 30 ug Lane 2: U937 (Human) Cell Lysate at 30 ug Lane 3: Spleen (Rat) Lysate at 40 ug Lane 4: Spleen (Mouse) Lysate at 40 ug Lane 5: HL-60 (Human) Cell Lysate at 30 ug Primary: Anti-CD86 (AP94474) at 1/1000 dilution Secondary: IRDye800CW Goat Anti-Rabbit IgG at 1/20000 dilution Predicted band size: 72-74 kD Observed band size: 72 kD

Please note: All products are 'FOR RESEARCH USE ONLY. NOT FOR USE IN DIAGNOSTIC OR THERAPEUTIC PROCEDURES'.