

RFP Rabbit pAb

RFP Rabbit pAb
Catalog # AP94470

Product Information

Application	WB, E
Host	Rabbit
Clonality	Polyclonal
Physical State	Liquid
Immunogen	Recombinant Red fluorescent protein
Isotype	IgG
Purity	affinity purified by Protein A
Buffer	0.01M TBS (pH7.4) with 1% BSA, 0.02% Proclin300 and 50% Glycerol.
Post-translational modifications	Contains a chromophore consisting of modified amino acid residues. The chromophore is formed by autocatalytic backbone condensation between Xaa-N and Gly-(N+2), oxidation of Tyr-(N+1) to didehydrotyrosine, and formation of a double bond to the alpha-amino nitrogen of residue Xaa-N. Maturation of the chromophore requires nothing other than molecular oxygen.
Important Note	This product as supplied is intended for research use only, not for use in human, therapeutic or diagnostic applications.
Background Descriptions	Fluorescent proteins have become a useful and ubiquitous tool for making chimeric proteins, where they function as a fluorescent protein tag. Typically they tolerate N- and C-terminal fusion to a broad variety of proteins. They have been expressed in most known cell types and are used as a noninvasive fluorescent marker in living cells and organisms. They enable a wide range of applications where they have functioned as a cell lineage tracer, reporter of gene expression, or as a measure of protein-protein interactions. Red Fluorescent Protein (RFP) is a versatile biological marker for monitoring physiological processes, visualizing protein localization, and detecting transgenic expression in vivo. RFP can be excited by the 488 nm or 532 nm laser line and is optimally detected at 588 nm.

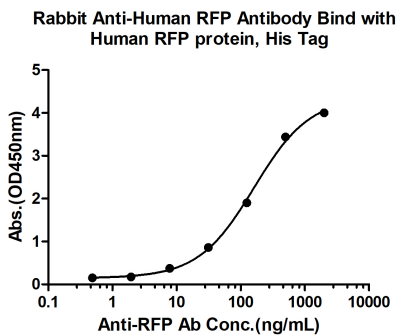
Additional Information

Dilution	WB=1:500-2000, ELISA=1:5000-10000
Format	0.01M TBS(pH7.4) with 1% BSA, 0.09% (W/V) sodium azide and 50% Glyce
Storage	Store at -20 °C for one year. Avoid repeated freeze/thaw cycles. When reconstituted in sterile pH 7.4 0.01M PBS or diluent of antibody the antibody is stable for at least two weeks at 2-4 °C.

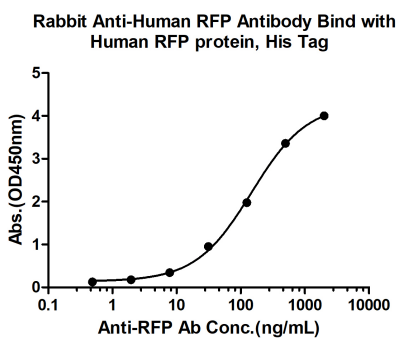
Background

This product as supplied is intended for research use only, not for use in human, therapeutic or diagnostic applications.

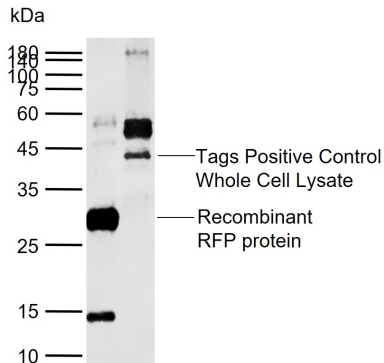
Images



Measured by its binding ability in a indirect ELISA. Immobilized Human RFP protein, His Tag (Cat. bs-33011P) at 2 µg/mL (100 µL/well) can bind Rabbit Anti-Human RFP Antibody, the EC50 is 161.8 ng/mL.



Measured by its binding ability in a indirect ELISA. Immobilized Human RFP protein, His Tag (Cat. bs-33011P) at 2 µg/mL (100 µL/well) can bind Rabbit Anti-Human RFP Antibody, the EC50 is 147.7 ng/mL.



Sample: Lane 1: Recombinant RFP protein, His Lane 2: Tags Positive Control Whole Cell Lysate, C-His Primary: Anti-RFP (AP94470) at 1/1000 dilution Secondary: IRDye800CW Goat Anti-Rabbit IgG at 1/20000 dilution Predicted band size: kDa Observed band size: 30,44 kDa

Please note: All products are 'FOR RESEARCH USE ONLY. NOT FOR USE IN DIAGNOSTIC OR THERAPEUTIC PROCEDURES'.