

Tri-Methyl-Histone H3 (Lys9) Rabbit pAb

Tri-Methyl-Histone H3 (Lys9) Rabbit pAb

Catalog # AP94458

Product Information

Application	WB, IHC-P, IHC-F, IF, ICC
Host	Rabbit
Clonality	Polyclonal

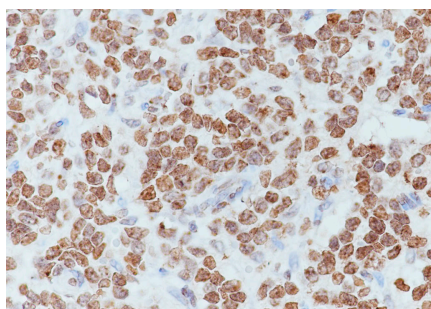
Additional Information

Dilution	WB=1:500-1:2000,IHC-P=1:100-500,IHC-F=,ICC/IF=1:100,IF=0
Format	0.01M TBS(pH7.4) with 1% BSA, 0.09% (W/V) sodium azide and 50% Glyce
Storage	Store at -20 °C for one year. Avoid repeated freeze/thaw cycles. When reconstituted in sterile pH 7.4 0.01M PBS or diluent of antibody the antibody is stable for at least two weeks at 2-4 °C.

Background

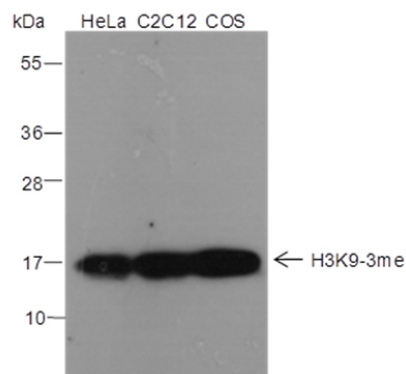
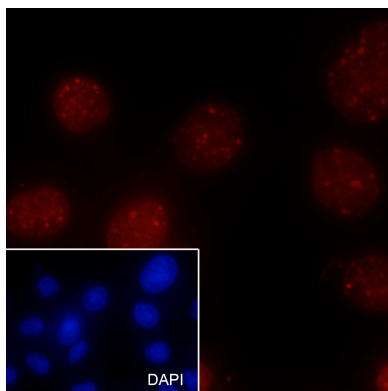
This product as supplied is intended for research use only, not for use in human, therapeutic or diagnostic applications.

Images



Tissue: Human neuroblastoma Section type: Formalin fixed & Paraffin -embedded section Retrieval method: High temperature and high pressure Retrieval buffer: Tris/EDTA buffer, pH 9.0 Primary ab dilution: 1:200 Primary ab incubation condition: 1 hour at room temperature Secondary ab: SP Kit(Rabbit) (sp-0023) Counter stain: Hematoxylin (Blue) Comment: Color brown is the positive signal for AP94458

Cell line: HeLa Fixative: 4% Paraformaldehyde Permeabilization: 0.1% TritonX-100 Primary ab dilution: 1:200 Primary incubation condition: 4°C overnight Secondary ab: Goat Anti-Rabbit IgG Nuclear counter stain: DAPI (Blue) Comment: Color red is the positive signal for AP94458



Blocking buffer: 5% NFDM/TBST Primary ab dilution:
1:2000 Primary ab incubation condition: 2 hours at room
temperature Secondary ab: Goat Anti-Rabbit IgG H&L
(HRP) Lysate: HeLa, C2C12, COS Protein loading quantity:
20 µg Exposure time: 10 s Predicted MW: 17 kDa
Observed MW: 17 kDa

Please note: All products are 'FOR RESEARCH USE ONLY. NOT FOR USE IN DIAGNOSTIC OR THERAPEUTIC PROCEDURES'.