

GRP75 Recombinant Mouse mAb

GRP75 Recombinant Mouse mAb

Catalog # AP94435

Product Information

Application	WB, IHC-P, IHC-F, IF
Host	Rabbit
Clonality	Recombinant
Physical State	Liquid
Isotype	IgG2a, Kappa
Purity	affinity purified by Protein G
Buffer	0.01M TBS (pH7.4) with 1% BSA, 0.02% Proclin300 and 50% Glycerol.
SUBCELLULAR LOCATION	Mitochondrion. Nucleus, nucleolus.
SIMILARITY	Belongs to the heat shock protein 70 family.
SUBUNIT	Interacts with FXN. Interacts with HSCB. Component of the MINOS/MitOS complex, that includes IMMT, HSPA9 and CHCHD3 and associates with mitochondrial outer membrane proteins SAMM50, MTX1 and MTX2.
Post-translational modifications	Phosphorylated upon DNA damage, probably by ATM or ATR.
Important Note	This product as supplied is intended for research use only, not for use in human, therapeutic or diagnostic applications.
Background Descriptions	This gene encodes a member of the heat shock protein 70 gene family. The encoded protein is primarily localized to the mitochondria but is also found in the endoplasmic reticulum, plasma membrane and cytoplasmic vesicles. This protein is a heat-shock cognate protein. This protein plays a role in cell proliferation, stress response and maintenance of the mitochondria. A pseudogene of this gene is found on chromosome 2.

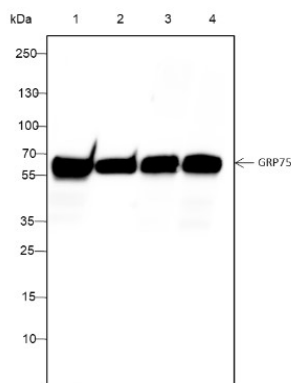
Additional Information

Dilution	WB=1:500-1:1000,IHC-P=1:100-500,IHC-F=1:100-500,IF=0
Format	0.01M TBS(pH7.4) with 1% BSA, 0.09% (W/V) sodium azide and 50% Glyce
Storage	Store at -20 °C for one year. Avoid repeated freeze/thaw cycles. When reconstituted in sterile pH 7.4 0.01M PBS or diluent of antibody the antibody is stable for at least two weeks at 2-4 °C.

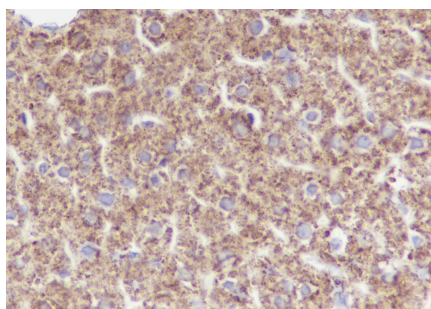
Background

This product as supplied is intended for research use only, not for use in human, therapeutic or diagnostic applications.

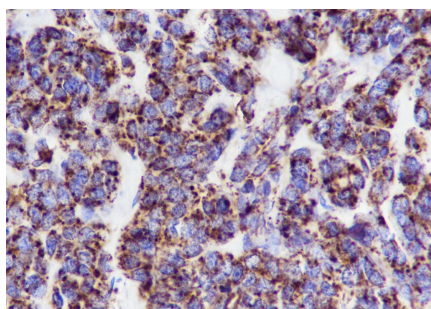
Images



Blocking buffer: 5% NFDM/TBST Primary Ab dilution: 1:1000 Primary Ab incubation condition: 4°C overnight
Secondary Ab: Goat Anti-Mouse IgG H&L (HRP) Lysate:1: HeLa, 2: HEK-293, 3:4T1, 4: Raw264.7 Protein loading quantity: 20 µg Exposure time: 10 s Predicted MW: 75 kDa Observed MW: 75 kDa



Tissue: Rat liver Section type: Formalin fixed & Paraffin-embedded section Retrieval method: High temperature and high pressure Retrieval buffer: Tris/EDTA buffer, pH 9.0 Primary Ab dilution: 1:100 Primary Ab incubation condition: 1 hour at room temperature Secondary Ab: SP Kit(Mouse)(sp-0024) Counter stain: Hematoxylin (Blue) Comment: Color brown is the positive signal for AP94435



Tissue: Human breast cancer Section type: Formalin fixed & Paraffin-embedded section Retrieval method: High temperature and high pressure Retrieval buffer: Tris/EDTA buffer, pH 9.0 Primary Ab dilution: 1:100 Primary Ab incubation condition: 1 hour at room temperature Secondary Ab: SP Kit(Mouse)(sp-0024) Counter stain: Hematoxylin (Blue) Comment: Color brown is the positive signal for AP94435

Please note: All products are 'FOR RESEARCH USE ONLY. NOT FOR USE IN DIAGNOSTIC OR THERAPEUTIC PROCEDURES'.