

# PTPN2 Recombinant Mouse mAb

PTPN2 Recombinant Mouse mAb

Catalog # AP94433

## Product Information

---

<b>Application</b>	WB, IHC-P, IHC-F, IF, ICC
<b>Host</b>	Rabbit
<b>Clonality</b>	Recombinant
<b>Physical State</b>	Liquid
<b>Isotype</b>	IgG1, Kappa
<b>Purity</b>	affinity purified by Protein G
<b>Buffer</b>	0.01M TBS (pH7.4) with 1% BSA, 0.02% Proclin300 and 50% Glycerol.
<b>SUBCELLULAR LOCATION</b>	[Isoform 2]: Nucleus. Cytoplasm. Cell membrane. Note=Predominantly localizes to chromatin (By similarity). Able to shuttle between the nucleus and the cytoplasm and to dephosphorylate plasma membrane receptors (PubMed:9488479). Recruited by activated ITGA1 at the plasma membrane. {ECO:0000250, ECO:0000269   PubMed:9488479}.
<b>Important Note</b>	This product as supplied is intended for research use only, not for use in human, therapeutic or diagnostic applications.
<b>Background Descriptions</b>	The protein encoded by this gene is a member of the protein tyrosine phosphatase (PTP) family. Members of the PTP family share a highly conserved catalytic motif, which is essential for the catalytic activity. PTPs are known to be signaling molecules that regulate a variety of cellular processes including cell growth, differentiation, mitotic cycle, and oncogenic transformation. Epidermal growth factor receptor and the adaptor protein Shc were reported to be substrates of this PTP, which suggested the roles in growth factor mediated cell signaling. Multiple alternatively spliced transcript variants encoding different isoforms have been found. Two highly related but distinctly processed pseudogenes that localize to chromosomes 1 and 13, respectively, have been reported. [provided by RefSeq, May 2011]

## Additional Information

---

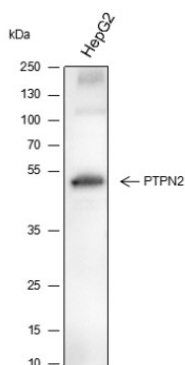
<b>Target/Specificity</b>	Ubiquitously expressed. Isoform 2 is probably the major isoform. Isoform 1 is expressed in T-cells and in placenta.
<b>Dilution</b>	WB=1:1000-1:5000,IHC-P=1:100-500,IHC-F=,ICC/IF=1:50,IF=0
<b>Format</b>	0.01M TBS(pH7.4) with 1% BSA, 0.09% (W/V) sodium azide and 50% Glyce
<b>Storage</b>	Store at -20 °C for one year. Avoid repeated freeze/thaw cycles. When reconstituted in sterile pH 7.4 0.01M PBS or diluent of antibody the antibody is stable for at least two weeks at 2-4 °C.

## Background

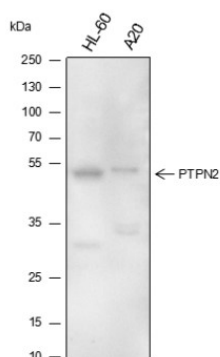
---

This product as supplied is intended for research use only, not for use in human, therapeutic or diagnostic applications.

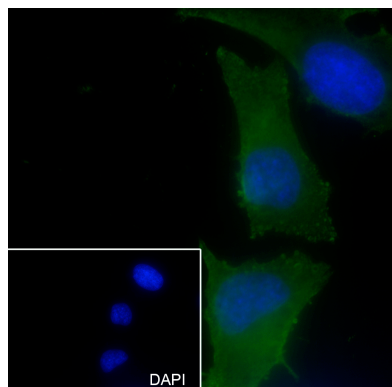
## Images



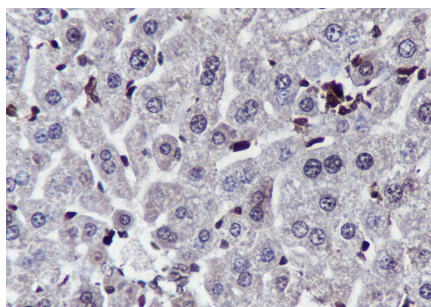
Blocking buffer: 5% NFDM/TBST Primary ab dilution: 1:5000 Primary ab incubation condition: room temperature 2h Secondary ab: Goat Anti-Mouse IgG H&L (HRP) Lysate: HepG2 Protein loading quantity: 20 µg Exposure time: 10 s Predicted MW: 45-50 kDa Observed MW: 45-50 kDa



Blocking buffer: 5% NFDM/TBST Primary ab dilution: 1:5000 Primary ab incubation condition: room temperature 2h Secondary ab: Goat Anti-Mouse IgG H&L (HRP) Lysate: HL-60, A20 Protein loading quantity: 20 µg Exposure time: 10 s Predicted MW: 45-50 kDa Observed MW: 45-50 kDa

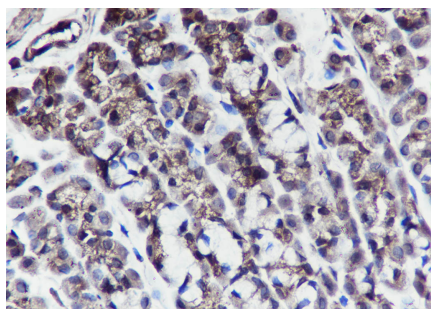


Cell line: HeLa Fixative: 4% Paraformaldehyde Permeabilization: 0.1% TritonX-100 Primary ab dilution: 1:50 Primary incubation condition: 4°C overnight Secondary ab: Goat Anti-Mouse IgG Nuclear counter stain: DAPI (Blue) Comment: Color green is the positive signal for AP94433

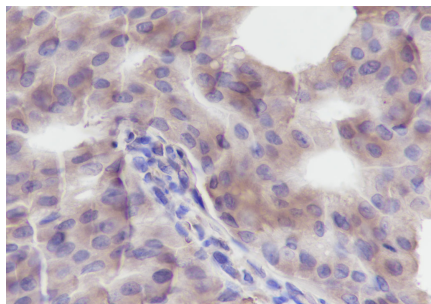


Tissue: Mouse liver Section type: Formalin fixed & Paraffin -embedded section Retrieval method: High temperature and high pressure Retrieval buffer: Tris/EDTA buffer, pH 9.0 Primary ab dilution: 1:100 Primary ab incubation condition: 1 hour at room temperature Secondary ab: SP Kit(Mouse)(sp-0024) Counter stain: Hematoxylin (Blue) Comment: Color brown is the positive signal for AP94433

Tissue: Rat stomach Section type: Formalin fixed & Paraffin -embedded section Retrieval method: High temperature and high pressure Retrieval buffer: Tris/EDTA buffer, pH 9.0 Primary ab dilution: 1:100 Primary ab incubation condition: 1 hour at room



temperature Secondary ab: SP Kit(Mouse)(sp-0024)  
Counter stain: Hematoxylin (Blue) Comment: Color brown  
is the positive signal for AP94433



Tissue: Human breast cancer Section type: Formalin fixed  
& Paraffin -embedded section Retrieval method: High  
temperature and high pressure Retrieval buffer:  
Tris/EDTA buffer, pH 9.0 Primary ab dilution: 1:100  
Primary ab incubation condition: 1 hour at room  
temperature Secondary ab: SP Kit(Mouse)(sp-0024)  
Counter stain: Hematoxylin (Blue) Comment: Color brown  
is the positive signal for AP94433

Please note: All products are 'FOR RESEARCH USE ONLY. NOT FOR USE IN DIAGNOSTIC OR THERAPEUTIC PROCEDURES'.