

ABCE1 Recombinant Rabbit mAb

ABCE1 Recombinant Rabbit mAb

Catalog # AP94423

Product Information

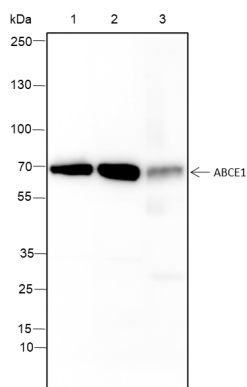
Application	WB, IF, ICC
Host	Rabbit
Clonality	Recombinant
Physical State	Liquid
Immunogen	A synthesized peptide derived from human ABCE1
Epitope Specificity	574-599
Isotype	IgG/Kappa
Purity	affinity purified by Protein A
Buffer	0.01M TBS (pH7.4) with 1% BSA, 0.02% Proclin300 and 50% Glycerol.
SUBCELLULAR LOCATION	Cytoplasm. Mitochondrion. Note=Localized to clusters of virus formation at the plasma membrane.
SIMILARITY	Belongs to the ABC transporter superfamily. ABCE family.Contains 2 4Fe-4S ferredoxin-type domains.Contains 2 ABC transporter domains.
SUBUNIT	Probably heterodimerizes with RNASEL; this interaction inhibits the RNASEL. Associates with HIV-1 Vif and HIV-1, HIV-2 and SIV Gag proteins.
Important Note	This product as supplied is intended for research use only, not for use in human, therapeutic or diagnostic applications.
Background Descriptions	ABCE1 is a member of the superfamily of ATP-binding cassette (ABC) transporters. ABC proteins transport various molecules across extra- and intra-cellular membranes. ABC genes are divided into seven distinct subfamilies (ABC1, MDR/TAP, MRP, ALD, OABP, GCN20, White). This protein is a member of the OABP subfamily. It is alternatively referred to as the RNase L inhibitor as it functions to block the activity of ribonuclease L(referenced from entrez gene).

Additional Information

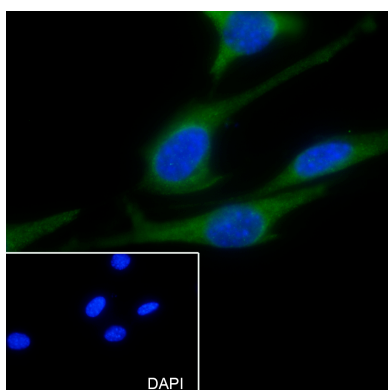
Dilution	WB=1:500-1:1000,ICC/IF=1:50
Format	0.01M TBS(pH7.4) with 1% BSA, 0.09% (W/V) sodium azide and 50% Glyce
Storage	Store at -20 °C for one year. Avoid repeated freeze/thaw cycles. When reconstituted in sterile pH 7.4 0.01M PBS or diluent of antibody the antibody is stable for at least two weeks at 2-4 °C.

Background

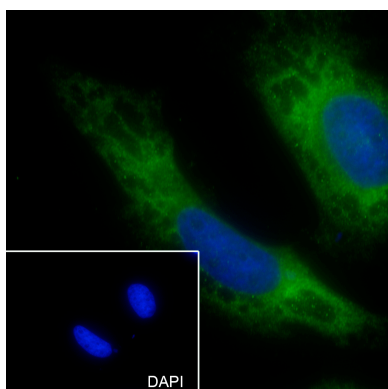
This product as supplied is intended for research use only, not for use in human, therapeutic or diagnostic applications.



Blocking buffer: 5% NFDM/TBST Primary ab dilution: 1:1000 Primary ab incubation condition: room temperature 2h Secondary ab: Goat Anti-Rabbit IgG H&L (HRP) Lysate: 1:HeLa, 2: Panc-1, 3: Mouse liver Protein loading quantity: 20 µg Exposure time: 10 s Predicted MW: 67 kDa Observed MW: 67 kDa



Cell line: NIH-3T3 Fixative: 4% Paraformaldehyde Permeabilization: 0.1% TritonX-100 Primary ab dilution: 1:50 Primary incubation condition: 4°C overnight Secondary ab: Goat Anti-Rabbit IgG Nuclear counter stain: DAPI (Blue) Comment: Color green is the positive signal for AP94423



Cell line: HeLa Fixative: 4% Paraformaldehyde Permeabilization: 0.1% TritonX-100 Primary ab dilution: 1:50 Primary incubation condition: 4°C overnight Secondary ab: Goat Anti-Rabbit IgG Nuclear counter stain: DAPI (Blue) Comment: Color green is the positive signal for AP94423

Please note: All products are 'FOR RESEARCH USE ONLY. NOT FOR USE IN DIAGNOSTIC OR THERAPEUTIC PROCEDURES'.