

ADAMTS1 Rabbit pAb

ADAMTS1 Rabbit pAb
Catalog # AP94418

Product Information

Application	WB, IHC-P, IHC-F, IF
Primary Accession	P97857
Reactivity	Mouse
Host	Rabbit
Clonality	Polyclonal
Calculated MW	105801
Physical State	Liquid
Immunogen	KLH conjugated synthetic peptide derived from mouse ADAMTS1
Epitope Specificity	851-967/967
Isotype	IgG
Purity	affinity purified by Protein A
Buffer	0.01M TBS (pH7.4) with 1% BSA, 0.02% Proclin300 and 50% Glycerol.
SUBCELLULAR LOCATION	Secreted > extracellular space > extracellular matrix.
SIMILARITY	Contains 1 disintegrin domain. Contains 1 peptidase M12B domain. Contains 3 TSP type-1 domains.
Post-translational modifications	The precursor is cleaved by a furin endopeptidase.
Important Note	This product as supplied is intended for research use only, not for use in human, therapeutic or diagnostic applications.
Background Descriptions	ADAMTS1 is a metalloproteinase of the ADAM (A Disintegrin And Metalloproteinase) family containing disintegrin-like domains. ADAMTS1, also known as METH1, was first described as a protein elevated in invasive mouse tumors. Initial findings indicated a role for ADAMTS1 in tumor progression, since the protein was preferentially expressed in more invasive tumor cell lines. ADAMTS1 is necessary for normal growth, fertility, and organ morphology and function.

Additional Information

Gene ID	11504
Other Names	A disintegrin and metalloproteinase with thrombospondin motifs 1, ADAM-TS 1, ADAM-TS1, ADAMTS-1, 3.4.24.-, Adamts1
Dilution	WB=1:500-2000,IHC-P=1:100-500,IHC-F=1:100-500,IF=1:100-500
Format	0.01M TBS(pH7.4) with 1% BSA, 0.09% (W/V) sodium azide and 50% Glyce
Storage	Store at -20 °C for one year. Avoid repeated freeze/thaw cycles. When reconstituted in sterile pH 7.4 0.01M PBS or diluent of antibody the antibody is stable for at least two weeks at 2-4 °C.

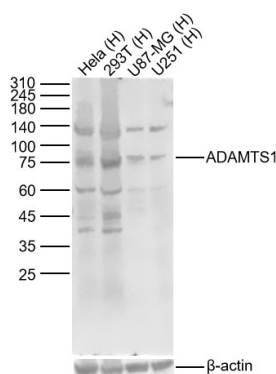
Protein Information

Name	Adamts1
Function	Metalloprotease which cleaves aggrecan, a cartilage proteoglycan, at the '1691-Glu- -Leu-1692' site (within the chondroitin sulfate attachment domain), and may be involved in its turnover (PubMed: 10930576 , PubMed: 9441751). Also cleaves COMP (By similarity). Has angiogenic inhibitor activity (By similarity). May play a critical role in follicular rupture (PubMed: 10781075).
Cellular Location	Secreted, extracellular space, extracellular matrix

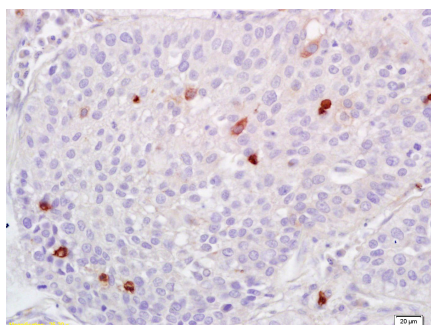
Background

This product as supplied is intended for research use only, not for use in human, therapeutic or diagnostic applications.

Images



Sample: Lane 1: Human Hela cell Lysates Lane 2: Human 293T cell Lysates Lane 3: Human U87-MG cell Lysates Lane 4: Human U251 cell Lysates Primary: Anti-ADAMTS1 (AP94418) at 1/1000 dilution Secondary: IRDye800CW Goat Anti-Rabbit IgG at 1/20000 dilution Predicted band size: 106kDa Observed band size: 80kDa



Tissue/cell: human lung carcinoma; 4% Paraformaldehyde-fixed and paraffin-embedded; Antigen retrieval: citrate buffer (0.01M, pH 6.0), Boiling bathing for 15min; Block endogenous peroxidase by 3% Hydrogen peroxide for 30min; Blocking buffer (normal goat serum,C-0005) at 37°C for 20 min; Incubation: Anti-ADAMTS1 Polyclonal Antibody, Unconjugated(AP94418) 1:200, overnight at 4°C, followed by conjugation to the secondary antibody(SP-0023) and DAB(C-0010) staining

Please note: All products are 'FOR RESEARCH USE ONLY. NOT FOR USE IN DIAGNOSTIC OR THERAPEUTIC PROCEDURES'.