

PCV2 capsid protein Rabbit pAb

PCV2 capsid protein Rabbit pAb

Catalog # AP94417

Product Information

Application	WB, E
Host	Rabbit
Clonality	Polyclonal
Calculated MW	28 KDa
Physical State	Liquid
Immunogen	Recombined PCV2 Cap protein
Epitope Specificity	full length protein
Isotype	IgG
Purity	affinity purified by Protein A
Buffer	0.01M TBS (pH7.4) with 1% BSA, 0.02% Proclin300 and 50% Glycerol.
Important Note	This product as supplied is intended for research use only, not for use in human, therapeutic or diagnostic applications.

Additional Information

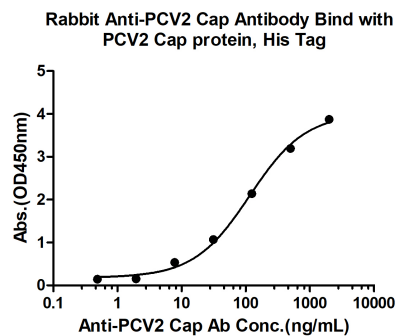
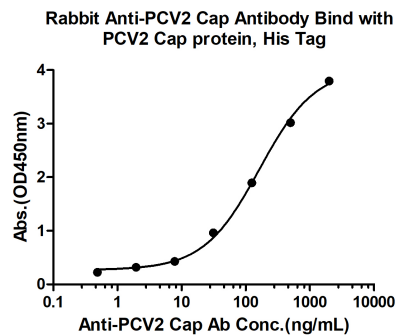
Dilution	WB=1:500-2000,ELISA=1:5000-10000
Format	0.01M TBS(pH7.4) with 1% BSA, 0.09% (W/V) sodium azide and 50% Glyce
Storage	Store at -20 °C for one year. Avoid repeated freeze/thaw cycles. When reconstituted in sterile pH 7.4 0.01M PBS or diluent of antibody the antibody is stable for at least two weeks at 2-4 °C.

Background

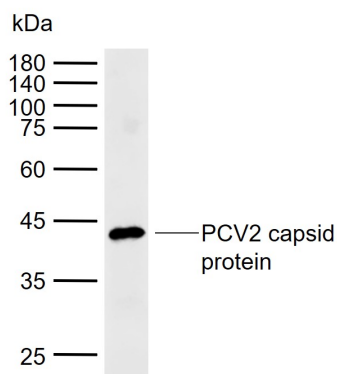
This product as supplied is intended for research use only, not for use in human, therapeutic or diagnostic applications.

Images

Measured by its binding ability in a indirect ELISA.
Immobilized PCV2 Cap protein, His Tag (Cat. bs-41401P)
at 2 µg/mL (100 µL/well) can bind Rabbit Anti-PCV2 Cap
Antibody, the EC50 is 163.5 ng/mL.



Measured by its binding ability in a indirect ELISA. Immobilized PCV2 Cap protein, His Tag (Cat. bs-41401P) at 2 µg/mL (100 µL/well) can bind Rabbit Anti-PCV2 Cap Antibody, the EC50 is 115.8 ng/mL.



Sample: Lane 1: Recombinant PCV2 Cap protein, Trx & His
 Primary: Anti-PCV2 capsid protein (AP94417) at 1/1000 dilution
 Secondary: IRDye800CW Goat Anti-Rabbit IgG at 1/20000 dilution
 Predicted band size: 28 kDa
 Observed band size: 41.5 kDa

Please note: All products are 'FOR RESEARCH USE ONLY. NOT FOR USE IN DIAGNOSTIC OR THERAPEUTIC PROCEDURES'.