

TPT1 Recombinant Mouse mAb

TPT1 Recombinant Mouse mAb

Catalog # AP94404

Product Information

| | |
|--------------------------------|--|
| Application | WB, IHC-P, IHC-F, IF |
| Host | Rabbit |
| Clonality | Recombinant |
| Physical State | Liquid |
| Isotype | IgG1, Kappa |
| Purity | affinity purified by Protein G |
| Buffer | 0.01M TBS (pH7.4) with 1% BSA, 0.02% Proclin300 and 50% Glycerol. |
| SUBCELLULAR LOCATION | Cytoplasm. |
| SIMILARITY | Belongs to the TCTP family. |
| SUBUNIT | Interacts with STEAP3. |
| Important Note | This product as supplied is intended for research use only, not for use in human, therapeutic or diagnostic applications. |
| Background Descriptions | TCTP is involved in calcium binding and microtubule stabilization. It is an immunoglobulin E dependent histamine-releasing factor produced by lymphocytes of atopic children and present in biologic fluids of allergic patients. Both human and mouse recombinant HRF proteins caused histamine release from human basophils of a subpopulation of donors (referenced from OMIM). |

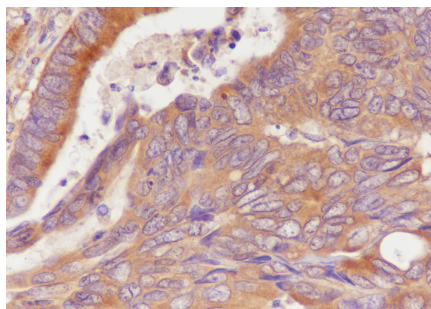
Additional Information

| | |
|---------------------------|---|
| Target/Specificity | Found in several healthy and tumoral cells including erythrocytes, hepatocytes, macrophages, platelets, keratinocytes, erythroleukemia cells, gliomas, melanomas, hepatoblastomas, and lymphomas. It cannot be detected in kidney and renal cell carcinoma (RCC). Expressed in placenta and prostate. |
| Dilution | WB=1:200-1:1000,IHC-P=1:100-500,IHC-F=1:100-500,IF=0 |
| Format | 0.01M TBS(pH7.4) with 1% BSA, 0.09% (W/V) sodium azide and 50% Glyce |
| Storage | Store at -20 °C for one year. Avoid repeated freeze/thaw cycles. When reconstituted in sterile pH 7.4 0.01M PBS or diluent of antibody the antibody is stable for at least two weeks at 2-4 °C. |

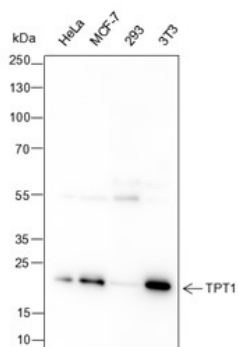
Background

This product as supplied is intended for research use only, not for use in human, therapeutic or diagnostic applications.

Images



Tissue: Human colon cancer Section type: Formalin fixed & Paraffin -embedded section Retrieval method: High temperature and high pressure Retrieval buffer: Tris/EDTA buffer, pH 9.0 Primary ab dilution: 1:100 Primary ab incubation condition: 1 hour at room temperature Counter stain: Hematoxylin Comment: Color brown is the positive signal for AP94404



Blocking buffer: 5% NFDM/TBST Primary ab dilution: 1:1000 Primary ab incubation condition: 4 °C overnight Lysate: HeLa, MCF-7, 293, 3T3 Protein loading quantity: 20 µg Exposure time: 60 s Predicted MW: 22 kDa Observed MW: 22 kDa

Please note: All products are 'FOR RESEARCH USE ONLY. NOT FOR USE IN DIAGNOSTIC OR THERAPEUTIC PROCEDURES'.