

TIA1 Recombinant Rabbit mAb

TIA1 Recombinant Rabbit mAb

Catalog # AP94402

Product Information

Application	WB
Host	Rabbit
Clonality	Recombinant
Physical State	Liquid
Isotype	IgG
Purity	affinity purified by Protein A
Buffer	0.01M TBS (pH7.4) with 1% BSA, 0.02% Proclin300 and 50% Glycerol.
SUBCELLULAR LOCATION	Cytoplasmic granule. Nucleus. Note=Accumulates in cytoplasmic stress granules (SG) following cellular damage.
SIMILARITY	Contains 3 RRM (RNA recognition motif) domains.
Important Note	This product as supplied is intended for research use only, not for use in human, therapeutic or diagnostic applications.
Background Descriptions	Involved in alternative pre-RNA splicing and regulation of mRNA translation by binding to AU-rich elements (AREs) located in mRNA 3' untranslated regions (3' UTRs). Possesses nucleolytic activity against cytotoxic lymphocyte target cells. May be involved in apoptosis.

Additional Information

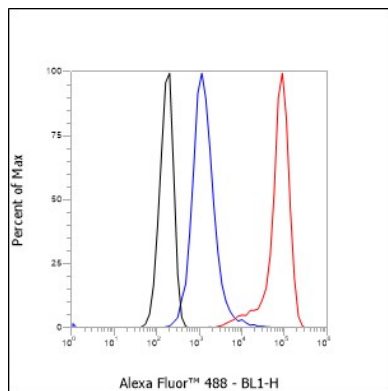
Dilution	WB=1:500-1000,Flow-Cyt=1:20-100
Format	0.01M TBS(pH7.4) with 1% BSA, 0.09% (W/V) sodium azide and 50% Glyce
Storage	Store at -20 °C for one year. Avoid repeated freeze/thaw cycles. When reconstituted in sterile pH 7.4 0.01M PBS or diluent of antibody the antibody is stable for at least two weeks at 2-4 °C.

Background

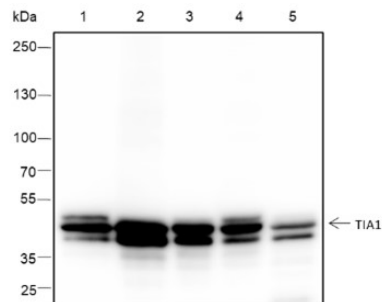
This product as supplied is intended for research use only, not for use in human, therapeutic or diagnostic applications.

Images

Cell line: Jurkat Fixative: 4% Paraformaldehyde
Permeabilization: 90% Methanol Primary ab dilution:
1:100 Secondary ab: Goat anti Rabbit IgG Unlabelled
control: The cell without incubation with primary
antibody and secondary antibody (Black line). Isotype



control: Rabbit monoclonal IgG (Blue line). Comment:
Line red is the positive signal for AP94402



Blocking buffer: 5% NFDM/TBST Primary ab dilution:
1:2000 Primary ab incubation condition: 2 hours at room
temperature Secondary ab: Goat Anti-Rabbit IgG H&L
(HRP) Lysate: 1: HeLa, 2: Jurkat, 3: K562, 4: MOLT-4, 5:
NIH-3T3 Protein loading quantity: 20 µg Exposure time:
30 s Predicted MW: 43 kDa Observed MW: 42-43 kDa

Please note: All products are 'FOR RESEARCH USE ONLY. NOT FOR USE IN DIAGNOSTIC OR THERAPEUTIC PROCEDURES'.