

# DCPS Recombinant Mouse mAb

DCPS Recombinant Mouse mAb

Catalog # AP94401

## Product Information

---

<b>Application</b>	WB, IHC-P, IHC-F, IF
<b>Host</b>	Rabbit
<b>Clonality</b>	Recombinant
<b>Physical State</b>	Liquid
<b>Isotype</b>	IgG2b/Kappa
<b>Purity</b>	affinity purified by Protein G
<b>Buffer</b>	0.01M TBS (pH7.4) with 1% BSA, 0.02% Proclin300 and 50% Glycerol.
<b>SUBCELLULAR LOCATION</b>	Cytoplasm. Nucleus.
<b>SIMILARITY</b>	Belongs to the HIT family.
<b>SUBUNIT</b>	Homodimer. Associates with components of the exosome multienzyme ribonuclease complex, such as EXOSC3 and EXOSC4. Interacts with NDOR1.
<b>Important Note</b>	This product as supplied is intended for research use only, not for use in human, therapeutic or diagnostic applications.
<b>Background Descriptions</b>	Eukaryotic cells primarily utilize exoribonucleases and decapping enzymes to degrade their mRNA. DcpS is a scavenger pyrophosphatase that hydrolyzes the residual cap structure following 3' to 5' decay of an mRNA. Following mRNA degradation DcpS releases N-7 methyl guanosine monophosphate and 5'-diphosphate terminated cap or mRNA products. The central histidine within the DcpS HIT motif is critical for decapping activity and defines the HIT motif as a new mRNA decapping domain, making DcpS the first member of the HIT family of proteins with a defined biological function. HIT proteins are homodimeric and contain two conserved 100-amino-acid HIT fold domains with independent active sites that are each sufficient to bind and hydrolyze cognate substrates.

## Additional Information

---

<b>Target/Specificity</b>	Detected in liver, brain, kidney, testis and prostate.
<b>Dilution</b>	WB=1:500-1:1000,IHC-P=1:100-500,IHC-F=1:100-500,IF=0
<b>Format</b>	0.01M TBS(pH7.4) with 1% BSA, 0.09% (W/V) sodium azide and 50% Glyce
<b>Storage</b>	Store at -20 °C for one year. Avoid repeated freeze/thaw cycles. When reconstituted in sterile pH 7.4 0.01M PBS or diluent of antibody the antibody is stable for at least two weeks at 2-4 °C.

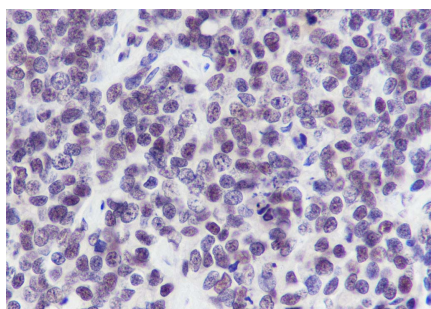
## Background

---

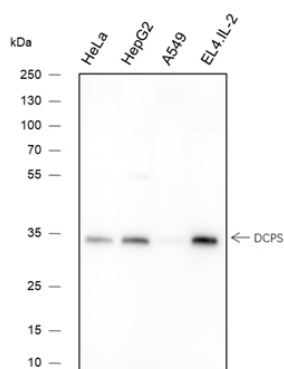
This product as supplied is intended for research use only, not for use in human, therapeutic or diagnostic

applications.

## Images



Tissue: Human breast cancer Section type: Formalin fixed & Paraffin -embedded section Retrieval method: High temperature and high pressure Retrieval buffer: Tris/EDTA buffer, pH 9.0 Primary ab dilution: 1:100 Primary ab incubation condition: 1 hour at room temperature Secondary ab: SP Kit(Mouse)(sp-0024) Counter stain: Hematoxylin (Blue) Comment: Color brown is the positive signal for AP94401



Blocking buffer: 5% NFDM/TBST Primary ab dilution: 1:1000 Primary ab incubation condition: 4°C overnight Secondary ab: Goat Anti-Mouse IgG H&L (HRP) Lysate: HeLa, HepG2, A549, EL4.IL-2 Protein loading quantity: 20 µg Exposure time: 60 s Predicted MW: 40 kDa Observed MW: 35 kDa

Please note: All products are 'FOR RESEARCH USE ONLY. NOT FOR USE IN DIAGNOSTIC OR THERAPEUTIC PROCEDURES'.