

KIF20A Recombinant Mouse mAb

KIF20A Recombinant Mouse mAb

Catalog # AP94394

Product Information

Application	WB, IF, ICC
Host	Rabbit
Clonality	Recombinant
Calculated MW	100 KDa
Physical State	Liquid
Isotype	IgG2b/Kappa
Purity	affinity purified by Protein G
Buffer	0.01M TBS (pH7.4) with 1% BSA, 0.02% Proclin300 and 50% Glycerol.
SUBCELLULAR LOCATION	Golgi apparatus (By similarity). Cytoplasm, cytoskeleton, spindle.
SIMILARITY	Belongs to the kinesin-like protein family. Contains 1 kinesin-motor domain.
Post-translational modifications	Phosphorylated by PLK1 at Ser-528 during mitosis, creating a docking site for PLK1 and recruiting PLK1 at central spindle.
Important Note	This product as supplied is intended for research use only, not for use in human, therapeutic or diagnostic applications.
Background Descriptions	Enables protein kinase binding activity. Involved in microtubule bundle formation; midbody abscission; and regulation of cytokinesis. Located in several cellular components, including cleavage furrow; intercellular bridge; and midbody. Implicated in restrictive cardiomyopathy. [provided by Alliance of Genome Resources, Apr 2022]

Additional Information

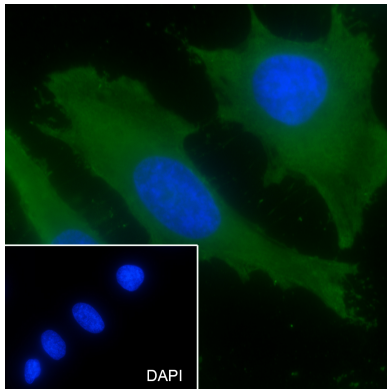
Dilution	WB=1:1000-1:5000, ICC/IF=1:50
Format	0.01M TBS(pH7.4) with 1% BSA, 0.09% (W/V) sodium azide and 50% Glyce
Storage	Store at -20 °C for one year. Avoid repeated freeze/thaw cycles. When reconstituted in sterile pH 7.4 0.01M PBS or diluent of antibody the antibody is stable for at least two weeks at 2-4 °C.

Background

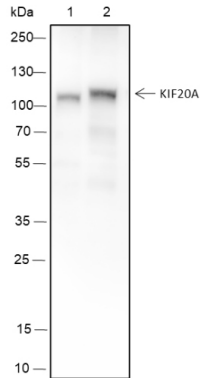
This product as supplied is intended for research use only, not for use in human, therapeutic or diagnostic applications.

Images

Cell line: HeLa Fixative: 100% Ice-cold methanol



Permeabilization: 0.1% TritonX-100 Primary Ab dilution: 1:50 Primary incubation condition: 4°C overnight
Secondary Ab: Goat Anti-Mouse IgG Nuclear counter stain: DAPI (Blue) Comment: Color green is the positive signal for AP94394



Blocking buffer: 5% NFDM/TBST Primary Ab dilution: 1:5000 Primary Ab incubation condition: room temperature 2h Secondary Ab: Goat Anti-Mouse IgG H&L (HRP) Lysate: 1: JK, 2: N2a Protein loading quantity: 20 µg Exposure time: 30 s Predicted MW: 100 kDa Observed MW: 120 kDa

Please note: All products are 'FOR RESEARCH USE ONLY. NOT FOR USE IN DIAGNOSTIC OR THERAPEUTIC PROCEDURES'.