

RuBisCO Rabbit pAb

RuBisCO Rabbit pAb

Catalog # AP94388

Product Information

| | |
|----------------------------|---|
| Application | WB |
| Host | Rabbit |
| Clonality | Polyclonal |
| Calculated MW | 52 KDa |
| Physical State | Liquid |
| Immunogen | KLH conjugated synthetic peptide derived from Arabidopsis thaliana Rubisco |
| Epitope Specificity | 151-250/479 |
| Isotype | IgG |
| Purity | affinity purified by Protein A |
| Buffer | 0.01M TBS (pH7.4) with 1% BSA, 0.02% Proclin300 and 50% Glycerol. |
| Important Note | This product as supplied is intended for research use only, not for use in human, therapeutic or diagnostic applications. |

Additional Information

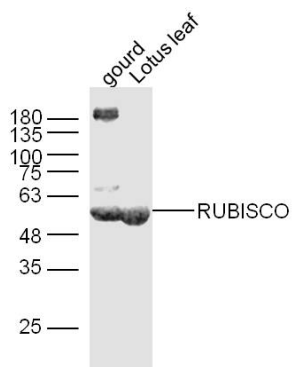
| | |
|-----------------|---|
| Dilution | WB=1:500-1000 |
| Format | 0.01M TBS(pH7.4) with 1% BSA, 0.09% (W/V) sodium azide and 50% Glyce |
| Storage | Store at -20 °C for one year. Avoid repeated freeze/thaw cycles. When reconstituted in sterile pH 7.4 0.01M PBS or diluent of antibody the antibody is stable for at least two weeks at 2-4 °C. |

Background

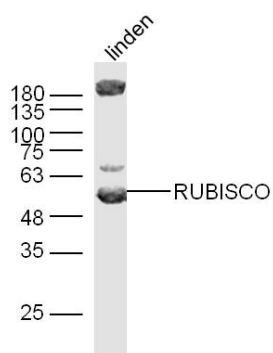
This product as supplied is intended for research use only, not for use in human, therapeutic or diagnostic applications.

Images

Sample: Gourd leaf Lysate at 40 ug Lotus leaf Lysate at 40 ug
Primary: Anti-RUBISCO (AP94388) at 1/300 dilution
Secondary: IRDye800CW Goat Anti-Rabbit IgG at 1/20000 dilution
Predicted band size: 52kD Observed band size: 52 kD



Sample: Linden Lysate at 40 ug Primary: Anti-RUBISCO (AP94388) at 1/300 dilution Secondary: IRDye800CW Goat Anti-Rabbit IgG at 1/20000 dilution Predicted band size: 52kD Observed band size: 52 kD



Please note: All products are 'FOR RESEARCH USE ONLY. NOT FOR USE IN DIAGNOSTIC OR THERAPEUTIC PROCEDURES'.