

# LPCAT1 Recombinant Mouse mAb

LPCAT1 Recombinant Mouse mAb

Catalog # AP94386

## Product Information

---

<b>Application</b>	WB
<b>Host</b>	Rabbit
<b>Clonality</b>	Recombinant
<b>Calculated MW</b>	59 KDa
<b>Physical State</b>	Liquid
<b>Isotype</b>	IgG2b/Kappa
<b>Purity</b>	affinity purified by Protein G
<b>Buffer</b>	0.01M TBS (pH7.4) with 1% BSA, 0.02% Proclin300 and 50% Glycerol.
<b>SUBCELLULAR LOCATION</b>	Endoplasmic reticulum membrane. Golgi apparatus membrane.
<b>SIMILARITY</b>	Belongs to the 1-acyl-sn-glycerol-3-phosphate acyltransferase family.
<b>Important Note</b>	This product as supplied is intended for research use only, not for use in human, therapeutic or diagnostic applications.
<b>Background Descriptions</b>	Lysophosphatidylcholine (LPC) acyltransferase (LPCAT; EC 2.3.1.23) catalyzes the conversion of LPC to phosphatidylcholine (PC) in the remodeling pathway of PC biosynthesis (Nakanishi et al., 2006 [PubMed 16704971]).[supplied by OMIM, May 2008]

## Additional Information

---

<b>Dilution</b>	WB=1:500-1:1000
<b>Format</b>	0.01M TBS(pH7.4) with 1% BSA, 0.09% (W/V) sodium azide and 50% Glyce
<b>Storage</b>	Store at -20 °C for one year. Avoid repeated freeze/thaw cycles. When reconstituted in sterile pH 7.4 0.01M PBS or diluent of antibody the antibody is stable for at least two weeks at 2-4 °C.

## Background

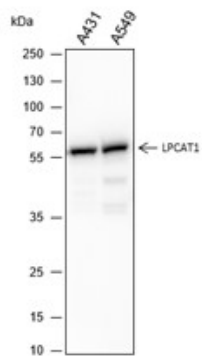
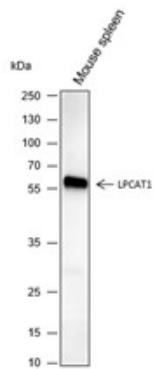
---

This product as supplied is intended for research use only, not for use in human, therapeutic or diagnostic applications.

## Images

---

Blocking buffer: 5% NFDm/TBST Primary ab dilution:  
1:1000 Primary ab incubation condition: 4°C overnight  
Secondary ab: Goat Anti-Mouse IgG H&L (HRP) Lysate:  
Mouse spleen Protein loading quantity: 20 µg Exposure  
time: 30 s Predicted MW: 55 kDa Observed MW: 55 kDa



Blocking buffer: 5% NFDM/TBST Primary ab dilution:  
1:1000 Primary ab incubation condition: room  
temperature 2h Secondary ab: Goat Anti-Mouse IgG H&L  
(HRP) Lysate: A431, A549 Protein loading quantity: 20 µg  
Exposure time: 10 s Predicted MW: 55 kDa Observed MW:  
55 kDa

Please note: All products are 'FOR RESEARCH USE ONLY. NOT FOR USE IN DIAGNOSTIC OR THERAPEUTIC PROCEDURES'.