

# ASGPR Recombinant Rabbit mAb

ASGPR Recombinant Rabbit mAb

Catalog # AP94381

## Product Information

---

<b>Application</b>	WB, IHC-P, IHC-F, IF, ICC
<b>Host</b>	Rabbit
<b>Clonality</b>	Recombinant
<b>Physical State</b>	Liquid
<b>Isotype</b>	IgG
<b>Purity</b>	affinity purified by Protein A
<b>Buffer</b>	0.01M TBS (pH7.4) with 1% BSA, 0.02% Proclin300 and 50% Glycerol.
<b>SUBCELLULAR LOCATION</b>	Membrane; Single-pass type II membrane protein.
<b>SIMILARITY</b>	Contains 1 C-type lectin domain.
<b>SUBUNIT</b>	Interacts with LASS2.
<b>Post-translational modifications</b>	Phosphorylated on a cytoplasmic Ser residue.
<b>Important Note</b>	This product as supplied is intended for research use only, not for use in human, therapeutic or diagnostic applications.
<b>Background Descriptions</b>	ASGR is a heterooligomeric receptor that is abundantly expressed on the sinusoidal surface of the hepatic plasma membrane. It is an endocytic receptor that rapidly binds and internalizes galactose-terminated glycoproteins (asialoglycoproteins or ASGP) from the circulation. The mouse ASGPR belongs to the long-form subfamily of the C-type/Ca <sup>2+</sup> dependent lectin family. It is a complex of two noncovalently-linked and highly homologous subunits, a major 42 kDa glycoprotein ASGPR1(MHL-1) and a minor 51 kDa glycoprotein ASGR2 (MHL-2). ASGPR1 is synthesized as a type II transmembrane protein that contains a cytosolic N-terminal domain, a single transmembrane segment, and an extracellular domain which contains two important structural regions. The first is a stalk domain that contributes to noncovalent oligomerization, and the second is a Ca <sup>2+</sup> -dependent carbohydrate binding domain at the very C-terminus that is unusually stabilized by three ions. The aa sequence of mouse ASGPR1 ECD is 89% and 79% identical to the ASGPR1 ECD of rat and human, respectively.

## Additional Information

---

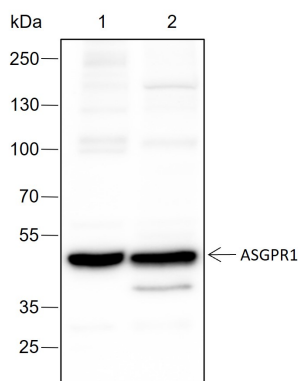
<b>Target/Specificity</b>	Expressed exclusively in hepatic parenchymal cells.
<b>Dilution</b>	WB=1:200-1:1000,IHC-P=1:100-500,IHC-F=1:100-500,ICC/IF=1:20-1:50,IF=0,Flow-Cyt=1:20-1:100
<b>Format</b>	0.01M TBS(pH7.4) with 1% BSA, 0.09% (W/V) sodium azide and 50% Glyce
<b>Storage</b>	Store at -20 °C for one year. Avoid repeated freeze/thaw cycles. When reconstituted in sterile pH 7.4 0.01M PBS or diluent of antibody the antibody

is stable for at least two weeks at 2-4 °C.

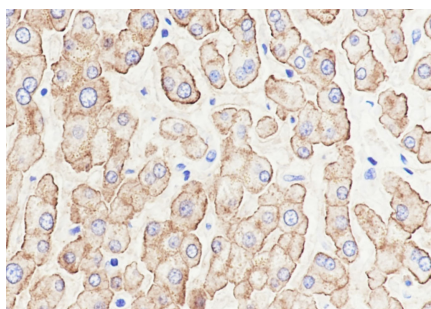
## Background

This product as supplied is intended for research use only, not for use in human, therapeutic or diagnostic applications.

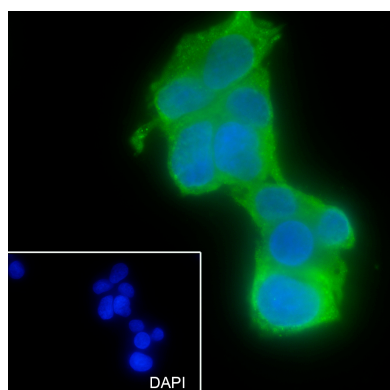
## Images



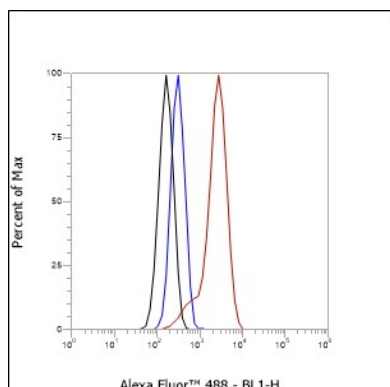
Blocking buffer: 5% NFDM/TBST Primary ab dilution: 1:1000 Primary ab incubation condition: 2 hours at room temperature Secondary ab: Goat Anti-Rabbit IgG H&L (HRP) Lysate: 1: HepG2, 2: Human liver Protein loading quantity: 20 µg Exposure time: 30 s Predicted MW: 33 kDa Observed MW: 40-50 kDa



Tissue: Human liver Section type: Formalin fixed & Paraffin -embedded section Retrieval method: High temperature and high pressure Retrieval buffer: Tris/EDTA buffer, pH 9.0 Primary ab dilution: 1:100 Primary ab incubation condition: 1 hour at room temperature Secondary ab: SP Kit(Rabbit) (sp-0023) Counter stain: Hematoxylin (Blue) Comment: Color brown is the positive signal for AP94381



Cell line: HepG2 Fixative: 4% Paraformaldehyde Permeabilization: 0.1% TritonX-100 Primary ab dilution: 1:50 Primary incubation condition: 4°C overnight Secondary ab: Goat Anti-Rabbit IgG Nuclear counter stain: DAPI (Blue) Comment: Color green is the positive signal for AP94381



Cell line: HepG2 Fixative: 4% Paraformaldehyde Permeabilization: 90% Methanol Primary ab dilution: 1:100 Secondary ab: Goat anti Rabbit IgG Unlabelled control: The cell without incubation with primary antibody and secondary antibody (Black line). Isotype control: Rabbit monoclonal IgG (Blue line). Comment: Line red is the positive signal for AP94381

Please note: All products are 'FOR RESEARCH USE ONLY. NOT FOR USE IN DIAGNOSTIC OR THERAPEUTIC PROCEDURES'.