

Calpastatin Recombinant Rabbit mAb

Calpastatin Recombinant Rabbit mAb

Catalog # AP94371

Product Information

Application	IHC-P, IHC-F, IF, ICC
Host	Rabbit
Clonality	Recombinant
Physical State	Liquid
Isotype	IgG
Purity	affinity purified by Protein A

Buffer 0.01M TBS (pH7.4) with 1% BSA, 0.02% Proclin300 and 50% Glycerol.

SIMILARITY Belongs to the protease inhibitor I27 (calpastatin) family.

Post-translational modifications The N-terminus is blocked.

Important Note This product as supplied is intended for research use only, not for use in human, therapeutic or diagnostic applications.

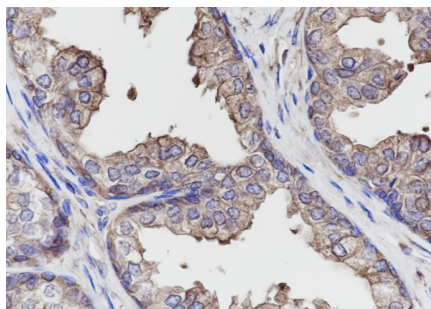
Background Descriptions Calpains are nonlysosomal, calcium-activated intracellular cysteine proteases that mediate specific Ca^{2+} -dependent processes including cell fusion, mitosis and meiosis. Calpains are heterodimers of a small regulatory subunit and one of three large catalytic subunits, designated Calpain 1, Calpain 2 and Calpain p94. Calpain 1 is an intracellular calcium-dependent protease that cleaves cytoskeletal and submembranous proteins. Calpain-1 co-localizes with human leukocyte antigen-DR (HLA-DR) on activated microglia in the aging brain. Cal-pain influences the process of spermatogenesis and the events preceding fertilization, such as the acrosome reaction. Calpastatin regulates Calpain by inhibiting both the proteolytic activity of Calpain and its binding to membranes. Calpastatin exists in two types, tissue type and erythrocyte type, resulting from both alternative splicing and proteolytic processing.

Additional Information

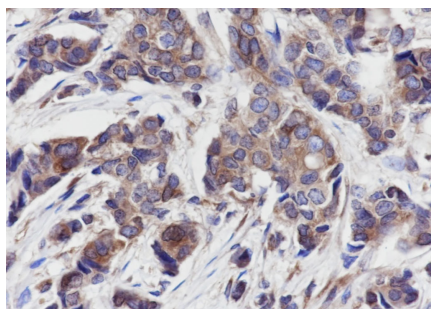
Dilution	IHC-P=1:100-500,IHC-F=1:100-500,ICC/IF=1:50,IF=0,Flow-Cyt=1:50-1:100
Format	0.01M TBS(pH7.4) with 1% BSA, 0.09% (W/V) sodium azide and 50% Glyce
Storage	Store at -20 °C for one year. Avoid repeated freeze/thaw cycles. When reconstituted in sterile pH 7.4 0.01M PBS or diluent of antibody the antibody is stable for at least two weeks at 2-4 °C.

Background

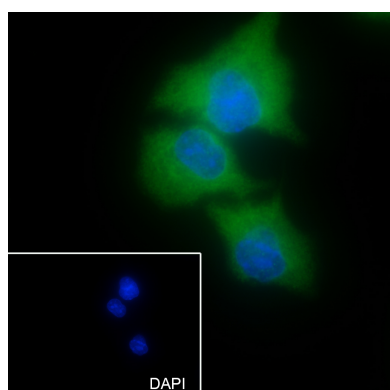
This product as supplied is intended for research use only, not for use in human, therapeutic or diagnostic applications.



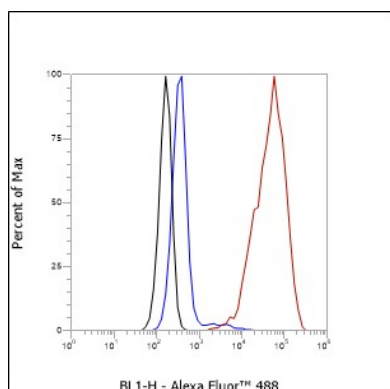
Tissue: Human prostatic hyperplasia Section type: Formalin fixed & Paraffin -embedded section Retrieval method: High temperature and high pressure Retrieval buffer: Tris/EDTA buffer, pH 9.0 Primary ab dilution: 1:1000 Primary ab incubation condition: 1 hour at room temperature Secondary ab: SP Kit(Rabbit) (sp-0023) Counter stain: Hematoxylin (Blue) Comment: Color brown is the positive signal for AP94371



Tissue: Human breast cancer Section type: Formalin fixed & Paraffin -embedded section Retrieval method: High temperature and high pressure Retrieval buffer: Tris/EDTA buffer, pH 9.0 Primary ab dilution: 1:1000 Primary ab incubation condition: 1 hour at room temperature Secondary ab: SP Kit(Rabbit) (sp-0023) Counter stain: Hematoxylin (Blue) Comment: Color brown is the positive signal for AP94371



Cell line: A549 Fixative: 100% Ice-cold methanol Permeabilization: 0.1% TritonX-100 Primary ab dilution: 1:50 Primary incubation condition: 4°C overnight Secondary ab: Goat Anti-Rabbit IgG Nuclear counter stain: DAPI (Blue) Comment: Color green is the positive signal for AP94371



Cell line: HeLa Fixative: 4% Paraformaldehyde Permeabilization: 90% Methanol Primary ab dilution: 1:100 Secondary ab: Goat anti Rabbit IgG Unlabelled control: The cell without incubation with primary antibody and secondary antibody (Black line). Isotype control: Rabbit monoclonal IgG (Blue line). Comment: Line red is the positive signal for AP94371

Please note: All products are 'FOR RESEARCH USE ONLY. NOT FOR USE IN DIAGNOSTIC OR THERAPEUTIC PROCEDURES'.