

GST tag Rabbit pAb

GST tag Rabbit pAb

Catalog # AP94363

Product Information

| | |
|--------------------------------|---|
| Application | WB |
| Host | Rabbit |
| Clonality | Polyclonal |
| Physical State | Liquid |
| Immunogen | Recombinant full length GST tag protein |
| Isotype | IgG |
| Purity | affinity purified by Protein A |
| Buffer | 0.01M TBS (pH7.4) with 1% BSA, 0.02% Proclin300 and 50% Glycerol. |
| SUBCELLULAR LOCATION | Cytoplasm. |
| SIMILARITY | Belongs to the GST superfamily. Mu family. Contains 1 GST C-terminal domain. Contains 1 GST N-terminal domain. |
| Important Note | This product as supplied is intended for research use only, not for use in human, therapeutic or diagnostic applications. |
| Background Descriptions | GST is a 26kDa protein encoded by the parasitic helminth <i>Schistosoma japonicum</i> and widely used in the pGEX family of GST plasmid expression vectors as a fusion protein with foreign proteins. |

Additional Information

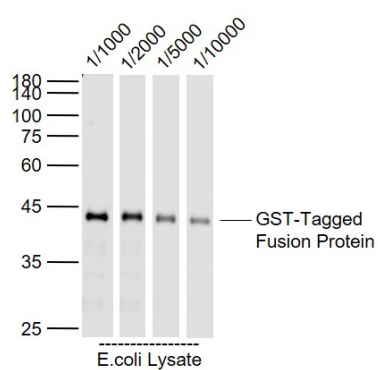
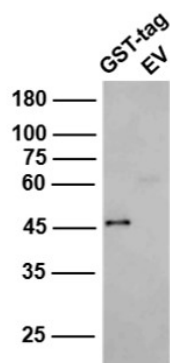
| | |
|-----------------|---|
| Dilution | WB=1:20000-60000 |
| Format | 0.01M TBS(pH7.4) with 1% BSA, 0.09% (W/V) sodium azide and 50% Glyce |
| Storage | Store at -20 °C for one year. Avoid repeated freeze/thaw cycles. When reconstituted in sterile pH 7.4 0.01M PBS or diluent of antibody the antibody is stable for at least two weeks at 2-4 °C. |

Background

This product as supplied is intended for research use only, not for use in human, therapeutic or diagnostic applications.

Images

Transformed (GST-tag or EV) E. coli cells lysates were subjected to SDS-PAGE followed by WB with AP94363 (Anti-GST) at dilution of 1:60,000 incubated at 4°C overnight.



Sample: GST-Tagged Fusion Protein Overexpression E.coli Lysate (Cat#: bs-41230P) at 4 ug Primary: Anti-GST Tag (AP94363) at 1/1000 ~ 1/10000 dilution Secondary: IRDye800CW Goat Anti-Rabbit IgG at 1/20000 dilution Predicted band size: 41 kD Observed band size: 41 kD

Please note: All products are 'FOR RESEARCH USE ONLY. NOT FOR USE IN DIAGNOSTIC OR THERAPEUTIC PROCEDURES'.