

TFF2 Rabbit pAb

TFF2 Rabbit pAb
Catalog # AP94360

Product Information

Application	WB, E
Primary Accession	Q03404
Reactivity	Mouse
Host	Rabbit
Clonality	Polyclonal
Calculated MW	14172
Physical State	Liquid
Immunogen	Recombinant Mouse TFF2 protein
Isotype	IgG
Purity	affinity purified by Protein A
Buffer	0.01M TBS (pH7.4) with 1% BSA, 0.02% Proclin300 and 50% Glycerol.
SUBCELLULAR LOCATION	Secreted.
SIMILARITY	Contains 2 P-type (trefoil) domains.
Important Note	This product as supplied is intended for research use only, not for use in human, therapeutic or diagnostic applications.
Background Descriptions	Members of the trefoil family are characterized by having at least one copy of the trefoil motif, a 40-amino acid domain that contains three conserved disulfides. They are stable secretory proteins expressed in gastrointestinal mucosa. Their functions are not defined, but they may protect the mucosa from insults, stabilize the mucus layer and affect healing of the epithelium. The encoded protein inhibits gastric acid secretion. This gene and two other related trefoil family member genes are found in a cluster on chromosome 21. [provided by RefSeq, Jul 2008]

Additional Information

Other Names	Trefoil factor 2, Spasmolytic polypeptide, SP, Tff2, Sml1, Sp
Target/Specificity	Stomach.
Dilution	WB=1:200-1000,ELISA=1:5000-10000
Format	0.01M TBS(pH7.4) with 1% BSA, 0.09% (W/V) sodium azide and 50% Glyce
Storage	Store at -20 °C for one year. Avoid repeated freeze/thaw cycles. When reconstituted in sterile pH 7.4 0.01M PBS or diluent of antibody the antibody is stable for at least two weeks at 2-4 °C.

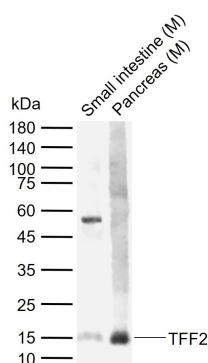
Protein Information

Name	Tff2
Synonyms	Sml1, Sp
Function	Inhibits gastrointestinal motility and gastric acid secretion. Could function as a structural component of gastric mucus, possibly by stabilizing glycoproteins in the mucus gel through interactions with carbohydrate side chains (By similarity).
Cellular Location	Secreted.
Tissue Location	Stomach and pancreas.

Background

This product as supplied is intended for research use only, not for use in human, therapeutic or diagnostic applications.

Images



Sample: Lane 1: Mouse Small intestine tissue lysates Lane 2: Mouse Pancreas tissue lysates Primary: Anti-TFF2 (AP94360) at 1/1000 dilution Secondary: IRDye800CW Goat Anti-Rabbit IgG at 1/20000 dilution Predicted band size: 12-14 kDa Observed band size: 15 kDa

Please note: All products are 'FOR RESEARCH USE ONLY. NOT FOR USE IN DIAGNOSTIC OR THERAPEUTIC PROCEDURES'.