

# MDH1 Recombinant Mouse mAb

MDH1 Recombinant Mouse mAb

Catalog # AP94347

## Product Information

---

<b>Application</b>	WB, IF, ICC
<b>Host</b>	Rabbit
<b>Clonality</b>	Recombinant
<b>Physical State</b>	Liquid
<b>Isotype</b>	IgG1, Kappa
<b>Purity</b>	affinity purified by Protein G
<b>Buffer</b>	0.01M TBS (pH7.4) with 1% BSA, 0.02% Proclin300 and 50% Glycerol.
<b>SUBCELLULAR LOCATION</b>	Cytoplasm.
<b>SIMILARITY</b>	Belongs to the LDH/MDH superfamily. MDH type 2 family.
<b>SUBUNIT</b>	Homodimer.
<b>Post-translational modifications</b>	ISGylated.Acetylation at Lys-118 dramatically enhances enzymatic activity and promotes adipogenic differentiation.
<b>Important Note</b>	This product as supplied is intended for research use only, not for use in human, therapeutic or diagnostic applications.
<b>Background Descriptions</b>	Malate dehydrogenase catalyzes the reversible oxidation of malate to oxaloacetate, utilizing the NAD/NADH cofactor system in the citric acid cycle. Malate dehydrogenase 1 (MDH1) is localized to the cytoplasm and may play pivotal roles in the malate-aspartate shuttle that operates in the metabolic coordination between cytosol and mitochondria.

## Additional Information

---

<b>Dilution</b>	WB=1:500-1:1000,ICC/IF=1:50
<b>Format</b>	0.01M TBS(pH7.4) with 1% BSA, 0.09% (W/V) sodium azide and 50% Glyce
<b>Storage</b>	Store at -20 °C for one year. Avoid repeated freeze/thaw cycles. When reconstituted in sterile pH 7.4 0.01M PBS or diluent of antibody the antibody is stable for at least two weeks at 2-4 °C.

## Background

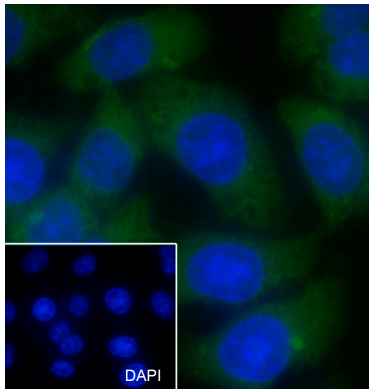
---

This product as supplied is intended for research use only, not for use in human, therapeutic or diagnostic applications.

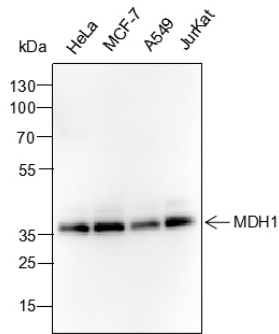
## Images

---

Cell line: HepG2 Fixative: 100% Ice-cold methanol



Permeabilization: 0.1% TritonX-100 Primary ab dilution: 1:50 Primary incubation condition: 4°C overnight Nuclear counter stain: DAPI (Blue) Comment: Color green is the positive signal for AP94347



Blocking buffer: 5% NFDM/TBST Primary ab dilution: 1:1000 Primary ab incubation condition: 4°C overnight Lysate: HeLa, MCF-7, A549, Jurkat Protein loading quantity: 20 µg Exposure time: 60 s Predicted MW: 36 kDa Observed MW: 36 kDa

Please note: All products are 'FOR RESEARCH USE ONLY. NOT FOR USE IN DIAGNOSTIC OR THERAPEUTIC PROCEDURES'.