

# PDHE1 Recombinant Mouse mAb

PDHE1 Recombinant Mouse mAb

Catalog # AP94346

## Product Information

---

<b>Application</b>	WB, IF, ICC
<b>Host</b>	Rabbit
<b>Clonality</b>	Recombinant
<b>Physical State</b>	Liquid
<b>Isotype</b>	IgG2a, Kappa
<b>Purity</b>	affinity purified by Protein G
<b>Buffer</b>	0.01M TBS (pH7.4) with 1% BSA, 0.02% Proclin300 and 50% Glycerol.
<b>Important Note</b>	This product as supplied is intended for research use only, not for use in human, therapeutic or diagnostic applications.
<b>Background Descriptions</b>	丙酮酸脱氢酶复合物催化丙酮酸整体转化为乙酰辅酶A和CO <sub>2</sub> ，从而将糖酵解途径与三羧酸循环联系起来。

## Additional Information

---

<b>Dilution</b>	WB=1:500-1:1000, ICC/IF=1:50
<b>Format</b>	0.01M TBS(pH7.4) with 1% BSA, 0.09% (W/V) sodium azide and 50% Glyce
<b>Storage</b>	Store at -20 °C for one year. Avoid repeated freeze/thaw cycles. When reconstituted in sterile pH 7.4 0.01M PBS or diluent of antibody the antibody is stable for at least two weeks at 2-4 °C.

## Background

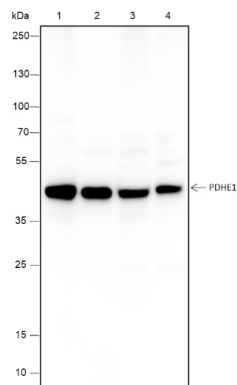
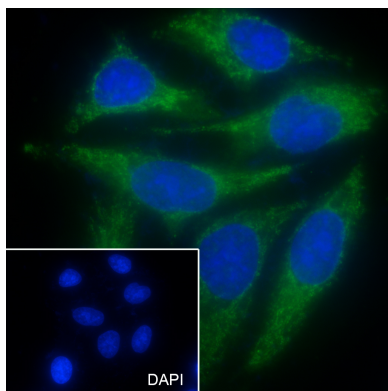
---

This product as supplied is intended for research use only, not for use in human, therapeutic or diagnostic applications.

## Images

---

Cell line: HepG2 Fixative: 100% Ice-cold methanol  
Permeabilization: 0.1% TritonX-100 Primary Ab dilution:  
1:50 Primary incubation condition: 4°C overnight Nuclear  
counter stain: DAPI (Blue) Comment: Color green is the  
positive signal for AP94346



Blocking buffer: 5% NFDM/TBST Primary Ab dilution:  
1:1000 Primary Ab incubation condition: 4°C overnight  
Lysate: 1: HeLa, 2: HEK-293, 3: MCF-7, 4: Jurkat Protein  
loading quantity: 20 µg Exposure time: 30 s Predicted  
MW: 43 kDa Observed MW: 43 kDa

Please note: All products are 'FOR RESEARCH USE ONLY. NOT FOR USE IN DIAGNOSTIC OR THERAPEUTIC PROCEDURES'.