

# CRLF2 Rabbit pAb

CRLF2 Rabbit pAb  
Catalog # AP94337

## Product Information

---

<b>Application</b>	WB
<b>Reactivity</b>	Mouse
<b>Host</b>	Rabbit
<b>Clonality</b>	Polyclonal
<b>Calculated MW</b>	36 KDa
<b>Physical State</b>	Liquid
<b>Immunogen</b>	KLH conjugated synthetic peptide derived from mouse CRLF2
<b>Epitope Specificity</b>	251-350/370
<b>Isotype</b>	IgG
<b>Purity</b>	affinity purified by Protein A
<b>Buffer</b>	0.01M TBS (pH7.4) with 1% BSA, 0.02% Proclin300 and 50% Glycerol.
<b>SUBCELLULAR LOCATION</b>	Isoform 1: Cell membrane; Single-pass type I membrane protein (Probable). Isoform 2: Secreted (Probable).
<b>SIMILARITY</b>	Belongs to the type I cytokine receptor family. Type 5 subfamily. Contains 1 fibronectin type-III domain.
<b>SUBUNIT</b>	Heterodimer of CRLF2 and IL7R.
<b>Important Note</b>	This product as supplied is intended for research use only, not for use in human, therapeutic or diagnostic applications.
<b>Background Descriptions</b>	TSLPR is a type I membrane receptor that forms a functional heterodimeric complex with IL7R to bind TSLP. The TSLP R contains a WSXWS motif required for proper protein folding and a box1 motif important for association with the JAKs. TSLPR has a predicted molecular weight approximately 41 kD, and two further isoforms have been reported that are produced by alternative splicing. The TSLPR is expressed preferentially in myeloid cells including dendritic cells and activated monocytes, and is weakly expressed in T cells. Expression has also been reported in heart, skeletal muscle, and kidney tissues. TSLP binding to the heterodimeric functional receptor (TSLPR and IL7R) activates JAK2, STAT3 and STAT5 to stimulate cell proliferation. Ligand receptor interactions have been implicated in the development of the hematopoietic system, dendritic cell maturation, and the maintenance and polarization of human Th2 memory T cells in allergic diseases.

## Additional Information

---

<b>Target/Specificity</b>	Expressed in heart, skeletal muscle, kidney and adult and fetal liver. Primarily expressed in dendrites and monocytes. Weakly expressed in T-cells.
<b>Dilution</b>	WB=1:500-2000
<b>Format</b>	0.01M TBS(pH7.4) with 1% BSA, 0.09% (W/V) sodium azide and 50% Glyce

## Storage

Store at -20 °C for one year. Avoid repeated freeze/thaw cycles. When reconstituted in sterile pH 7.4 0.01M PBS or diluent of antibody the antibody is stable for at least two weeks at 2-4 °C.

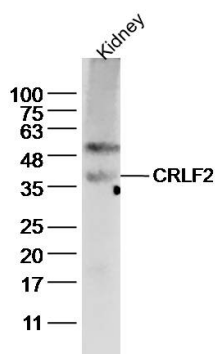
## Background

---

This product as supplied is intended for research use only, not for use in human, therapeutic or diagnostic applications.

## Images

---



Sample: kidney(mouse) Lysate at 40 ug Primary:  
Anti-CRLF2 (AP94337) at 1/300 dilution Secondary:  
IRDye800CW Goat Anti-Rabbit IgG at 1/20000 dilution  
Predicted band size: 36kD Observed band size: 36 kD

Please note: All products are 'FOR RESEARCH USE ONLY. NOT FOR USE IN DIAGNOSTIC OR THERAPEUTIC PROCEDURES'.