

IKIP Rabbit pAb

IKIP Rabbit pAb

Catalog # AP94335

Product Information

Application	WB
Reactivity	Human
Host	Rabbit
Clonality	Polyclonal
Calculated MW	39 KDa
Physical State	Liquid
Immunogen	KLH conjugated synthetic peptide derived from human IKIP
Epitope Specificity	250-350/350
Isotype	IgG
Purity	affinity purified by Protein A
Buffer	0.01M TBS (pH7.4) with 1% BSA, 0.02% Proclin300 and 50% Glycerol.
SUBCELLULAR LOCATION	Endoplasmic reticulum membrane; Single-pass membrane protein. Note=Isoform 4 deletion of the hydrophobic, or transmembrane region between AA 45-63 results in uniform distribution throughout the cell, suggesting that this region is responsible for endoplasmic reticulum localization.
Post-translational modifications	Isoform 4 may be phosphorylated at Thr-362 by similarity with mouse isoform 1. N-glycosylated. Isoform 4 is glycosylated at Asn-154.
Important Note	This product as supplied is intended for research use only, not for use in human, therapeutic or diagnostic applications.
Background Descriptions	IKIP (I kappa B kinase interacting protein) is located on chromosome 12 in close proximity to APAF1 (apoptotic protease-activating factor-1). IKIP was originally cloned from a yeast two hybrid screening as an IKK2 interacting protein. IKIP and APAF1 share a common 488 bp promoter from which the two genes are transcribed in opposite directions, presumably in a co-regulated manner. Three IKIP transcripts are generated by differential splicing and alternative exon usage and show no significant homology to other genes. IKIP is expressed predominantly in the lung, kidney, spleen, thymus and skeletal muscle. Like APAF1, expression of IKIP is enhanced by irradiation, in a p53-dependent manner. When transfected into endothelial cells IKIP promotes apoptosis suggesting that it plays a role in the cell death process as well as NF-kB regulation.

Additional Information

Target/Specificity	Expressed in vein endothelial cells. Isoform 4 is expressed in lung, kidney, spleen, thymus and skeletal muscle.
Dilution	WB=1:500-2000
Format	0.01M TBS(pH7.4) with 1% BSA, 0.09% (W/V) sodium azide and 50% Glyce

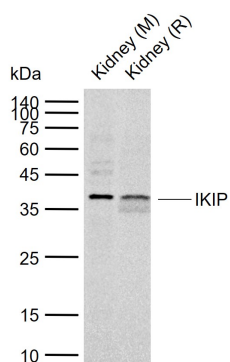
Storage

Store at -20 °C for one year. Avoid repeated freeze/thaw cycles. When reconstituted in sterile pH 7.4 0.01M PBS or diluent of antibody the antibody is stable for at least two weeks at 2-4 °C.

Background

This product as supplied is intended for research use only, not for use in human, therapeutic or diagnostic applications.

Images



Sample: Lane 1: Mouse Kidney tissue lysates Lane 2: Rat Kidney tissue lysates Primary: Anti-IKIP (AP94335) at 1/1000 dilution Secondary: IRDye800CW Goat Anti-Rabbit IgG at 1/20000 dilution Predicted band size: 39 kDa Observed band size: 38 kDa

Please note: All products are 'FOR RESEARCH USE ONLY. NOT FOR USE IN DIAGNOSTIC OR THERAPEUTIC PROCEDURES'.