

# HSV-Tag Mouse mAb

HSV-Tag Mouse mAb

Catalog # AP94334

## Product Information

---

<b>Application</b>	WB
<b>Host</b>	Rabbit
<b>Clonality</b>	Monoclonal
<b>Physical State</b>	Liquid
<b>Immunogen</b>	KLH conjugated synthetic peptide HSV-Tag
<b>Isotype</b>	IgG1
<b>Purity</b>	affinity purified by Protein G
<b>Buffer</b>	0.01M TBS (pH7.4) with 1% BSA, 0.02% Proclin300 and 50% Glycerol.
<b>Important Note</b>	This product as supplied is intended for research use only, not for use in human, therapeutic or diagnostic applications.
<b>Background Descriptions</b>	HSV tag is a peptide epitope tag, sequence: QPELAPEDPED.

## Additional Information

---

<b>Dilution</b>	WB=1:1000-5000
<b>Format</b>	0.01M TBS(pH7.4) with 1% BSA, 0.09% (W/V) sodium azide and 50% Glyce
<b>Storage</b>	Store at -20 °C for one year. Avoid repeated freeze/thaw cycles. When reconstituted in sterile pH 7.4 0.01M PBS or diluent of antibody the antibody is stable for at least two weeks at 2-4 °C.

## Background

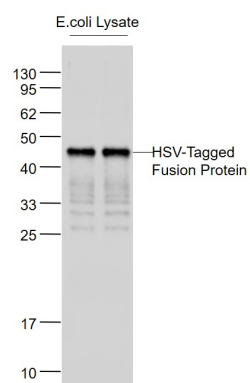
---

This product as supplied is intended for research use only, not for use in human, therapeutic or diagnostic applications.

## Images

---

Sample: Lane1: HSV-Tagged Fusion Protein  
Overexpression E.coli Lysate at 2ug Lane2: HSV-Tagged  
Fusion Protein Overexpression E.coli Lysate at 2ug  
Primary: Anti-HSV tag (AP94334) at 1/1000 dilution  
Secondary: IRDye800CW Goat Anti-Mouse IgG at 1/20000  
dilution Predicted band size: 41 kD Observed band size:  
45 kD



Please note: All products are 'FOR RESEARCH USE ONLY. NOT FOR USE IN DIAGNOSTIC OR THERAPEUTIC PROCEDURES'.