

# HBeAg Mouse mAb

HBeAg Mouse mAb

Catalog # AP94333

## Product Information

---

<b>Application</b>	WB
<b>Host</b>	Rabbit
<b>Clonality</b>	Monoclonal
<b>Calculated MW</b>	18 KDa
<b>Physical State</b>	Liquid
<b>Immunogen</b>	HBeAg full length protein
<b>Isotype</b>	IgG
<b>Purity</b>	affinity purified by Protein G
<b>Buffer</b>	0.01M PBS (pH7.4) with 0.02% Proclin300.
<b>SUBCELLULAR LOCATION</b>	Virion membrane.
<b>SIMILARITY</b>	Belongs to the orthohepadnavirus major surface antigen family.
<b>SUBUNIT</b>	Li-HBsAg interacts with capsid protein and with HDV Large delta antigen. Isoform M associates with host chaperone CANX through its pre-S2 N glycan. This association may be essential for M proper secretion.
<b>Post-translational modifications</b>	Isoform M is N-terminally acetylated at a ratio of 90%, and N-glycosylated at the pre-S2 region. Myristoylated.
<b>Important Note</b>	This product as supplied is intended for research use only, not for use in human, therapeutic or diagnostic applications.
<b>Background Descriptions</b>	人乙型肝炎表面抗原抗体

## Additional Information

---

<b>Dilution</b>	WB=1:500-2000
<b>Format</b>	0.01M TBS(pH7.4) with 1% BSA, 0.09% (W/V) sodium azide and 50% Glyce
<b>Storage</b>	Store at -20 °C for one year. Avoid repeated freeze/thaw cycles. When reconstituted in sterile pH 7.4 0.01M PBS or diluent of antibody the antibody is stable for at least two weeks at 2-4 °C.

## Background

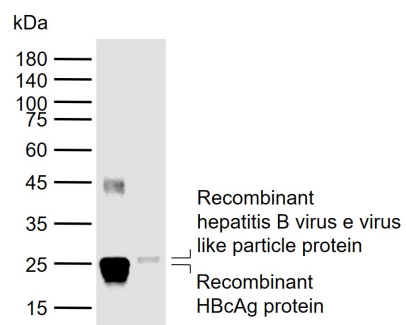
---

This product as supplied is intended for research use only, not for use in human, therapeutic or diagnostic applications.

## Images

---

Sample: Lane 1: Recombinant HBcAg protein, Tag free



Lane 2: Recombinant hepatitis B virus e virus like particle protein, His Primary: Anti-HBeAg (AP94333) at 1/1000 dilution Secondary: IRDye800CW Goat Anti-Mouse IgG at 1/20000 dilution Predicted band size: 18 kDa Observed band size: 25 kDa

Please note: All products are 'FOR RESEARCH USE ONLY. NOT FOR USE IN DIAGNOSTIC OR THERAPEUTIC PROCEDURES'.