

Alpha s2 Casein Rabbit pAb

Alpha s2 Casein Rabbit pAb

Catalog # AP94332

Product Information

Application	IHC-P, IHC-F, IF
Host	Rabbit
Clonality	Polyclonal
Calculated MW	24 KDa
Physical State	Liquid
Immunogen	KLH conjugated synthetic peptide derived from cow Alpha s2 Casein
Epitope Specificity	165-203/222
Isotype	IgG
Purity	affinity purified by Protein A
Buffer	0.01M TBS (pH7.4) with 1% BSA, 0.02% Proclin300 and 50% Glycerol.
SUBCELLULAR LOCATION	Secreted.
SIMILARITY	Belongs to the alpha-casein family.
Important Note	This product as supplied is intended for research use only, not for use in human, therapeutic or diagnostic applications.
Background Descriptions	Important role in the capacity of milk to transport calcium phosphate. Casocidin-I inhibits the growth of E.coli and S.carnosus.

Additional Information

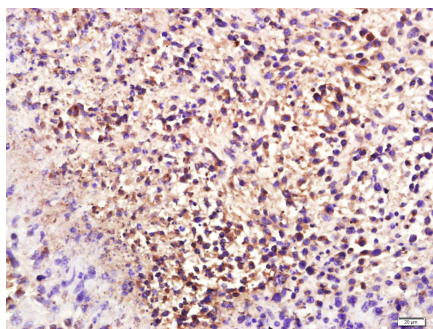
Target/Specificity	Mammary gland specific. Secreted in milk.
Dilution	IHC-P=1:100-500,IHC-F=1:100-500,IF=1:100-500
Format	0.01M TBS(pH7.4) with 1% BSA, 0.09% (W/V) sodium azide and 50% Glyce
Storage	Store at -20 °C for one year. Avoid repeated freeze/thaw cycles. When reconstituted in sterile pH 7.4 0.01M PBS or diluent of antibody the antibody is stable for at least two weeks at 2-4 °C.

Background

This product as supplied is intended for research use only, not for use in human, therapeutic or diagnostic applications.

Images

Paraformaldehyde-fixed, paraffin embedded (Mouse mammary tumor); Antigen retrieval by boiling in sodium



citrate buffer (pH6.0) for 15min; Block endogenous peroxidase by 3% hydrogen peroxide for 20 minutes; Blocking buffer (normal goat serum) at 37°C for 30min; Antibody incubation with (Alpha s2 Casein) Polyclonal Antibody, Unconjugated (AP94332) at 1:400 overnight at 4°C, followed by a conjugated secondary antibody (sp-0023) for 20 minutes and DAB staining.

Please note: All products are 'FOR RESEARCH USE ONLY. NOT FOR USE IN DIAGNOSTIC OR THERAPEUTIC PROCEDURES'.