

CD52 Rabbit pAb

CD52 Rabbit pAb
Catalog # AP94331

Product Information

Application	IHC-P, IHC-F, IF, E
Reactivity	Human
Host	Rabbit
Clonality	Polyclonal
Calculated MW	6 KDa
Physical State	Liquid
Immunogen	KLH conjugated synthetic peptide derived from human CD52
Epitope Specificity	20-50/61
Isotype	IgG
Purity	affinity purified by Protein A
Buffer	0.01M TBS (pH7.4) with 1% BSA, 0.02% Proclin300 and 50% Glycerol.
SUBCELLULAR LOCATION	Cell membrane
Important Note	This product as supplied is intended for research use only, not for use in human, therapeutic or diagnostic applications.
Background Descriptions	Involved in positive regulation of cytosolic calcium ion concentration. Predicted to be located in extracellular region and plasma membrane. Predicted to be intrinsic component of plasma membrane. Predicted to be active in sperm midpiece. [provided by Alliance of Genome Resources, Apr 2022]

Additional Information

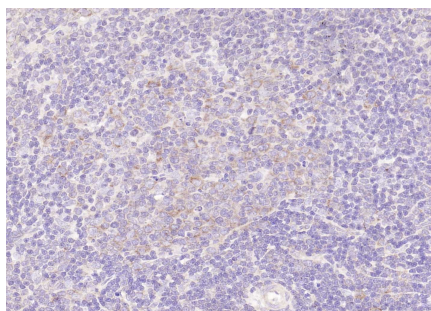
Dilution	IHC-P=1:50-200,IHC-F=1:400-800,IF=1:100-500,ELISA=1:10000-20000
Format	0.01M TBS(pH7.4) with 1% BSA, 0.09% (W/V) sodium azide and 50% Glyce
Storage	Store at -20 °C for one year. Avoid repeated freeze/thaw cycles. When reconstituted in sterile pH 7.4 0.01M PBS or diluent of antibody the antibody is stable for at least two weeks at 2-4 °C.

Background

This product as supplied is intended for research use only, not for use in human, therapeutic or diagnostic applications.

Images

Paraformaldehyde-fixed, paraffin embedded (rat spleen);



Antigen retrieval by boiling in sodium citrate buffer (pH6.0) for 15min; Block endogenous peroxidase by 3% hydrogen peroxide for 20 minutes; Blocking buffer (normal goat serum) at 37°C for 30min; Antibody incubation with (CD52) Polyclonal Antibody, Unconjugated (AP94331) at 1:200 overnight at 4°C, followed by operating according to SP Kit(Rabbit) (sp-0023) instructions and DAB staining.

Please note: All products are 'FOR RESEARCH USE ONLY. NOT FOR USE IN DIAGNOSTIC OR THERAPEUTIC PROCEDURES'.