

ATP5O Recombinant Mouse mAb

ATP5O Recombinant Mouse mAb

Catalog # AP94323

Product Information

Application	WB, IF, ICC
Host	Rabbit
Clonality	Recombinant
Physical State	Liquid
Isotype	IgG1, Kappa
Purity	affinity purified by Protein G
Buffer	0.01M TBS (pH7.4) with 1% BSA, 0.02% Proclin300 and 50% Glycerol.
SUBCELLULAR LOCATION	Mitochondrion. Mitochondrion inner membrane.
SIMILARITY	Belongs to the ATPase delta chain family.
Important Note	This product as supplied is intended for research use only, not for use in human, therapeutic or diagnostic applications.
Background Descriptions	The protein encoded by this gene is a component of the F-type ATPase found in the mitochondrial matrix. F-type ATPases are composed of a catalytic core and a membrane proton channel. The encoded protein appears to be part of the connector linking these two components and may be involved in transmission of conformational changes or proton conductance. [provided by RefSeq, Jul 2008]

Additional Information

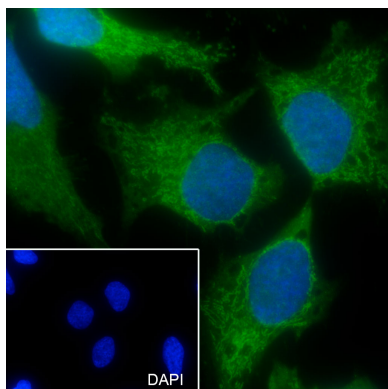
Dilution	WB=1:1000-1:5000, ICC/IF=1:50
Format	0.01M TBS(pH7.4) with 1% BSA, 0.09% (W/V) sodium azide and 50% Glyce
Storage	Store at -20 °C for one year. Avoid repeated freeze/thaw cycles. When reconstituted in sterile pH 7.4 0.01M PBS or diluent of antibody the antibody is stable for at least two weeks at 2-4 °C.

Background

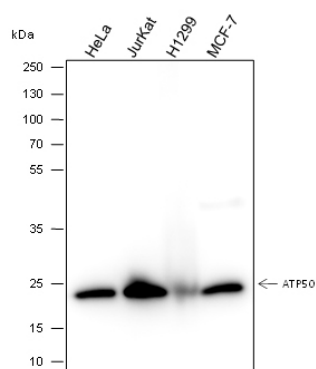
This product as supplied is intended for research use only, not for use in human, therapeutic or diagnostic applications.

Images

Cell line: HeLa Fixative: 4% Paraformaldehyde
Permeabilization: 0.1% TritonX-100 Primary ab dilution:
1:50 Primary incubation condition: 4°C overnight
Secondary ab: Goat Anti-Mouse IgG Nuclear counter



stain: DAPI (Blue) Comment: Color green is the positive signal for AP94323



Blocking buffer: 5% NFDM/TBST Primary ab dilution: 1:5000 Primary ab incubation condition: 4°C overnight
Secondary ab: Goat Anti-Mouse IgG H&L (HRP) Lysate: HeLa, 293, H1299, MCF-7 Protein loading quantity: 20 µg
Exposure time: 60 s Predicted MW: 23 kDa Observed MW: 23 kDa

Please note: All products are 'FOR RESEARCH USE ONLY. NOT FOR USE IN DIAGNOSTIC OR THERAPEUTIC PROCEDURES'.