

NUP50 Recombinant Mouse mAb

NUP50 Recombinant Mouse mAb

Catalog # AP94308

Product Information

Application	WB, IHC-P, IHC-F, IF
Host	Rabbit
Clonality	Recombinant
Physical State	Liquid
Isotype	IgG1, Kappa
Purity	affinity purified by Protein G
Buffer	0.01M TBS (pH7.4) with 1% BSA, 0.02% Proclin300 and 50% Glycerol.
SUBCELLULAR LOCATION	Nucleus, nuclear pore complex. Nucleus membrane; Peripheral membrane protein; Nucleoplasmic side (By similarity). Note=Localizes to the nucleoplasmic fibrils of the nuclear pore complex (By similarity).
SIMILARITY	Contains 1 RanBD1 domain.
SUBUNIT	Interacts with Importin alpha-2, Importin beta, Importin beta-2, NUP153, Ran binding protein 7, CDKN1B and itself (By similarity).
Important Note	This product as supplied is intended for research use only, not for use in human, therapeutic or diagnostic applications.
Background Descriptions	NUP50 is a component of the nuclear pore complex that has a direct role in nuclear protein export. NUP50 may serve as a binding site on the nuclear side of the pore complex for export receptor-cargo complexes. NUP50 interacts with multiple transport receptor proteins including p27Kip1. This interaction is required for correct intracellular transport and degradation of p27Kip1.

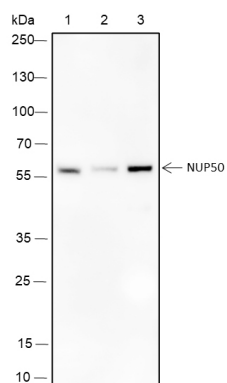
Additional Information

Target/Specificity	Ubiquitous. Highest levels in testis, peripheral blood leukocytes and fetal liver.
Dilution	WB=1:500-1:1000,IHC-P=1:100-500,IHC-F=1:100-500,IF=0
Format	0.01M TBS(pH7.4) with 1% BSA, 0.09% (W/V) sodium azide and 50% Glyce
Storage	Store at -20 °C for one year. Avoid repeated freeze/thaw cycles. When reconstituted in sterile pH 7.4 0.01M PBS or diluent of antibody the antibody is stable for at least two weeks at 2-4 °C.

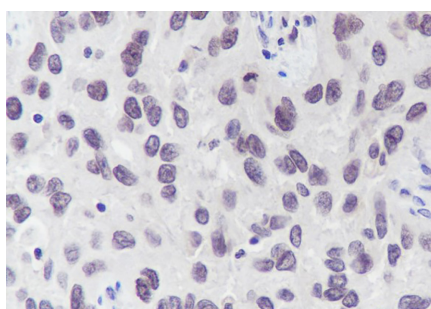
Background

This product as supplied is intended for research use only, not for use in human, therapeutic or diagnostic applications.

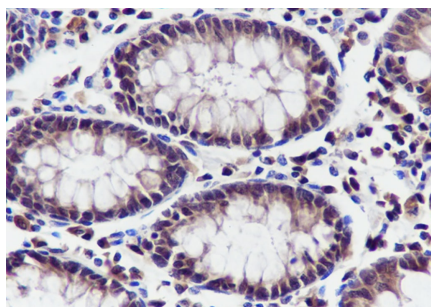
Images



Blocking buffer: 5% NFDM/TBST Primary ab dilution: 1:1000 Primary ab incubation condition: 2 hours at room temperature Secondary ab: Goat Anti-Mouse IgG H&L (HRP) Lysate: 1: JK, 2: MOLT-4, 3: 293 Protein loading quantity: 20 µg Exposure time: 60 s Predicted MW: 50 kDa Observed MW: 55 kDa



Tissue: Human-lung-squamous-carcinoma Section type: Formalin fixed & Paraffin -embedded section Retrieval method: High temperature and high pressure Retrieval buffer: Tris/EDTA buffer, pH 9.0 Primary ab dilution: 100 Primary ab incubation condition: 1 hour at room temperature Secondary ab: SP Kit(Mouse)(sp-0024) Counter stain: Hematoxylin (Blue) Comment: Color brown is the positive signal for AP94308



Tissue: Human colon Section type: Formalin fixed & Paraffin -embedded section Retrieval method: High temperature and high pressure Retrieval buffer: Tris/EDTA buffer, pH 9.0 Primary ab dilution: 100 Primary ab incubation condition: 1 hour at room temperature Secondary ab: SP Kit(Mouse)(sp-0024) Counter stain: Hematoxylin (Blue) Comment: Color brown is the positive signal for AP94308

Please note: All products are 'FOR RESEARCH USE ONLY. NOT FOR USE IN DIAGNOSTIC OR THERAPEUTIC PROCEDURES'.