

CD321 Recombinant Mouse mAb

CD321 Recombinant Mouse mAb

Catalog # AP94305

Product Information

Application	IF, ICC
Host	Rabbit
Clonality	Recombinant
Physical State	Liquid
Isotype	IgG1, Kappa
Purity	affinity purified by Protein G
Buffer	0.01M TBS (pH7.4) with 1% BSA, 0.02% Proclin300 and 50% Glycerol.
SUBCELLULAR LOCATION	Cell junction, tight junction. Cell membrane; Single-pass type I membrane protein.
SIMILARITY	Belongs to the immunoglobulin superfamily. Contains 2 Ig-like V-type (immunoglobulin-like) domains.
SUBUNIT	Interacts with the ninth PDZ domain of MPDZ. Interacts with the first PDZ domain of PARD3. The association between PARD3 and PARD6B probably disrupts this interaction. Interacts with the orthoreovirus sigma-1 capsid protein (By similarity).
Post-translational modifications	N-glycosylated.
Important Note	This product as supplied is intended for research use only, not for use in human, therapeutic or diagnostic applications.
Background Descriptions	Junctional Adhesion Molecule 1 (JAM1) seems to play a role in epithelial tight junction formation. It appears early in primordial forms of cell junctions and recruits PARD3. The association of the PARD6-PARD3 complex may prevent the interaction of PARD3 with JAM1, thereby preventing tight junction assembly. JAM1 plays a role in regulating monocyte transmigration involved in integrity of the epithelial barrier. JAM1 is also involved in platelet activation.

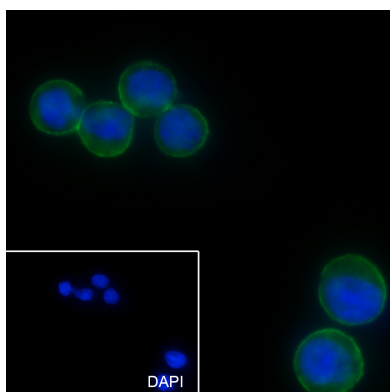
Additional Information

Dilution	ICC/IF=1:50, Flow-Cyt=1:50-1:100
Format	0.01M TBS (pH7.4) with 1% BSA, 0.09% (W/V) sodium azide and 50% Glyce
Storage	Store at -20 °C for one year. Avoid repeated freeze/thaw cycles. When reconstituted in sterile pH 7.4 0.01M PBS or diluent of antibody the antibody is stable for at least two weeks at 2-4 °C.

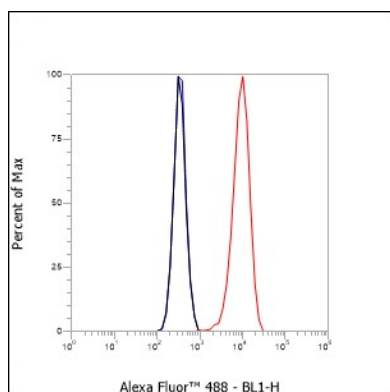
Background

This product as supplied is intended for research use only, not for use in human, therapeutic or diagnostic applications.

Images



Cell line: HT-29 Fixative: 4% Paraformaldehyde
Permeabilization: 0.1% Triton X-100 Primary Ab dilution:
1:50 Primary incubation condition: 4°C overnight
Secondary Ab: Goat Anti-Mouse IgG Nuclear counter
stain: DAPI (Blue) Comment: Color green is the positive
signal for AP94305



Cell line: HT-29 Fixative: Unfixed Permeabilization: None
Primary Ab dilution: 1:100 Secondary Ab: Goat anti
Mouse IgG Unlabelled control: The cell without
incubation with primary antibody and secondary
antibody (Black line). Isotype control: Mouse monoclonal
IgG1 (Blue line). Comment: Line red is the positive signal
for AP94305

Please note: All products are 'FOR RESEARCH USE ONLY. NOT FOR USE IN DIAGNOSTIC OR THERAPEUTIC PROCEDURES'.