

PCMT1 Recombinant Mouse mAb

PCMT1 Recombinant Mouse mAb

Catalog # AP94303

Product Information

Application	WB, IF, ICC
Host	Rabbit
Clonality	Recombinant
Physical State	Liquid
Isotype	IgG1, Kappa
Purity	affinity purified by Protein G
Buffer	0.01M TBS (pH7.4) with 1% BSA, 0.02% Proclin300 and 50% Glycerol.
SUBCELLULAR LOCATION	Cytoplasm.
SIMILARITY	Belongs to the methyltransferase superfamily. L-isoaspartyl/D-aspartyl protein methyltransferase family.
SUBUNIT	Monomer.
Important Note	This product as supplied is intended for research use only, not for use in human, therapeutic or diagnostic applications.
Background Descriptions	PCMT1 (Protein-L-isoaspartate (D-aspartate) O-methyltransferase) plays a role in the repair and/or degradation of damaged proteins by initiating the conversion of abnormal D-aspartyl and L-isoaspartyl residues to the normal L-aspartyl form. It catalyzes the methyl esterification of L-isoaspartyl and D-aspartyl residues in peptides and proteins that result from spontaneous deamidation, isomerization, and racemization of normal L-aspartyl and L-asparaginyl residues.

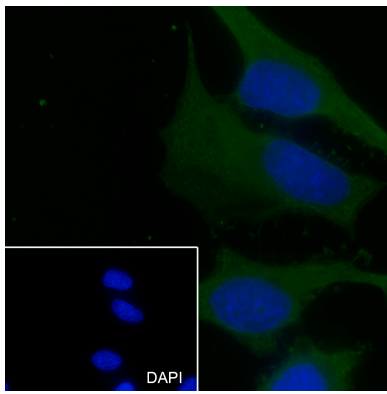
Additional Information

Dilution	WB=1:500-1:1000, ICC/IF=1:50
Format	0.01M TBS(pH7.4) with 1% BSA, 0.09% (W/V) sodium azide and 50% Glyce
Storage	Store at -20 °C for one year. Avoid repeated freeze/thaw cycles. When reconstituted in sterile pH 7.4 0.01M PBS or diluent of antibody the antibody is stable for at least two weeks at 2-4 °C.

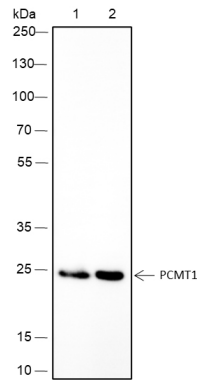
Background

This product as supplied is intended for research use only, not for use in human, therapeutic or diagnostic applications.

Images



Permeabilization: 0.1% TritonX-100 Primary ab dilution: 1:50 Primary incubation condition: 4°C overnight
Secondary ab: Goat Anti-Mouse IgG Nuclear counter stain: DAPI (Blue) Comment: Color green is the positive signal for AP94303



Blocking buffer: 5% NFDM/TBST Primary ab dilution: 1:1000 Primary ab incubation condition: 2 hours at room temperature Secondary ab: Goat Anti-Mouse IgG H&L (HRP) Lysate:1: HeLa, 2: 293T Protein loading quantity: 20 µg Exposure time: 30 s Predicted MW: 27 kDa Observed MW: 27 kDa

Please note: All products are 'FOR RESEARCH USE ONLY. NOT FOR USE IN DIAGNOSTIC OR THERAPEUTIC PROCEDURES'.