

CD38 (PE) Recombinant Mouse mAb

CD38 (PE) Recombinant Mouse mAb

Catalog # AP94302

Product Information

Application	IF, ICC
Host	Rabbit
Clonality	Recombinant
Physical State	Liquid
Isotype	IgG2a, Kappa
Purity	affinity purified by Protein G
Buffer	0.01M TBS (pH7.4) with 1% BSA, 0.02% Proclin300 and 50% Glycerol.
SUBCELLULAR LOCATION	Membrane; Single-pass type II membrane protein.
SIMILARITY	Belongs to the ADP-ribosyl cyclase family.
Important Note	This product as supplied is intended for research use only, not for use in human, therapeutic or diagnostic applications.
Background Descriptions	The protein encoded by this gene is a non-lineage-restricted, type II transmembrane glycoprotein that synthesizes and hydrolyzes cyclic adenosine 5'-diphosphate-ribose, an intracellular calcium ion mobilizing messenger. The release of soluble protein and the ability of membrane-bound protein to become internalized indicate both extracellular and intracellular functions for the protein. This protein has an N-terminal cytoplasmic tail, a single membrane-spanning domain, and a C-terminal extracellular region with four N-glycosylation sites. Crystal structure analysis demonstrates that the functional molecule is a dimer, with the central portion containing the catalytic site. It is used as a prognostic marker for patients with chronic lymphocytic leukemia. Alternative splicing results in multiple transcript variants. [provided by RefSeq, Sep 2015]

Additional Information

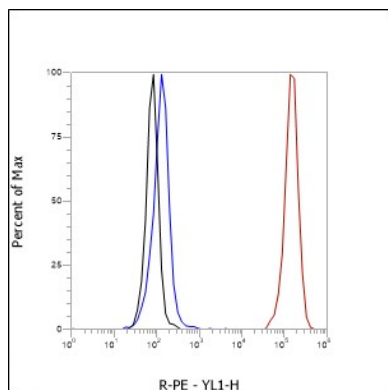
Target/Specificity	Expressed at high levels in pancreas, liver, kidney, brain, testis, ovary, placenta, malignant lymphoma and neuroblastoma.
Dilution	ICC/IF=1:50,Flow-Cyt=1:50-1:100
Format	0.01M TBS(pH7.4) with 1% BSA, 0.09% (W/V) sodium azide and 50% Glyce
Storage	Store at -20 °C for one year. Avoid repeated freeze/thaw cycles. When reconstituted in sterile pH 7.4 0.01M PBS or diluent of antibody the antibody is stable for at least two weeks at 2-4 °C.

Background

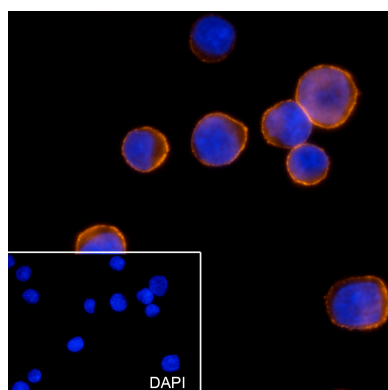
This product as supplied is intended for research use only, not for use in human, therapeutic or diagnostic

applications.

Images



Cell line: Raji Fixative: Unfixed Permeabilization: None
Primary ab dilution: 1:100 Primary incubation condition:
30 min at room temperature Unlabelled control: The cell
without incubation with primary antibody (Black line).
Isotype control: Mouse monoclonal IgG (Blue line).
Comment: Line red is the positive signal for AP94302



Cell line: Ramos Fixative: 4% Paraformaldehyde
Permeabilization: 0.1% TritonX-100 Primary ab dilution:
1:50 Primary incubation condition: 45 mins at room
temperature Nuclear counter stain: DAPI (Blue)
Comment: Color orange is the positive signal for AP94302

Please note: All products are 'FOR RESEARCH USE ONLY. NOT FOR USE IN DIAGNOSTIC OR THERAPEUTIC PROCEDURES'.