

# Hyaluronidase-1 Rabbit pAb

Hyaluronidase-1 Rabbit pAb

Catalog # AP94300

## Product Information

---

<b>Application</b>	IHC-P, IHC-F, IF
<b>Primary Accession</b>	<a href="#">Q76HN1</a>
<b>Reactivity</b>	Rat
<b>Host</b>	Rabbit
<b>Clonality</b>	Polyclonal
<b>Calculated MW</b>	50645
<b>Physical State</b>	Liquid
<b>Immunogen</b>	KLH conjugated synthetic peptide derived from rat Haase
<b>Epitope Specificity</b>	271-400/449
<b>Isotype</b>	IgG
<b>Purity</b>	affinity purified by Protein A
<b>Buffer</b>	0.01M TBS (pH7.4) with 1% BSA, 0.02% Proclin300 and 50% Glycerol.
<b>SUBCELLULAR LOCATION</b>	Secreted. Lysosome.
<b>SIMILARITY</b>	Belongs to the glycosyl hydrolase 56 family. Contains 1 EGF-like domain.
<b>Important Note</b>	This product as supplied is intended for research use only, not for use in human, therapeutic or diagnostic applications.
<b>Background Descriptions</b>	Hyaluronidase degrades hyaluronic acid, which is an important structural proteoglycan found in basement membranes and also extracellular matrices. There are six members of the hyaluronidase family. Hyaluronidase PH20 is a GPI-anchored enzyme located on the human sperm surface and inner acrosomal membrane and plays a role in sperm penetration through the the hyaluronic acid-rich cumulus cell layer surrounding the oocyte. Abnormal expression of this gene has been implicated in degradation of basement membranes leading to tumor invasion and metastasis.

## Additional Information

---

<b>Gene ID</b>	367166
<b>Other Names</b>	Hyaluronidase-1, Hyal-1, 3.2.1.35, Hyaluronoglucosaminidase-1, Hyal1
<b>Target/Specificity</b>	Highly expressed in liver, kidney, lung and skin.
<b>Dilution</b>	IHC-P=1:100-500,IHC-F=1:100-500,IF=1:100-500,Flow-Cyt=2ug/Test
<b>Format</b>	0.01M TBS(pH7.4) with 1% BSA, 0.09% (W/V) sodium azide and 50% Glyce
<b>Storage</b>	Store at -20 °C for one year. Avoid repeated freeze/thaw cycles. When reconstituted in sterile pH 7.4 0.01M PBS or diluent of antibody the antibody is stable for at least two weeks at 2-4 °C.

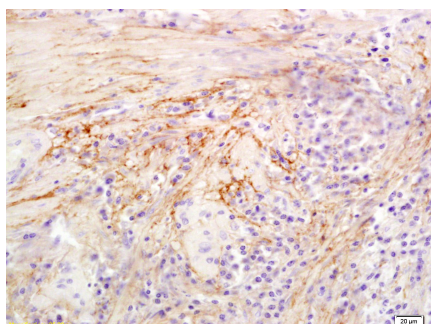
## Protein Information

Name	Hyal1
Function	May have a role in promoting tumor progression. May block the TGF $\beta$ 1-enhanced cell growth (By similarity). Overexpression of HYAL1 suppressed the growth rate of colon carcinoma cell tumors in an experimental model.
Cellular Location	Secreted. Lysosome.

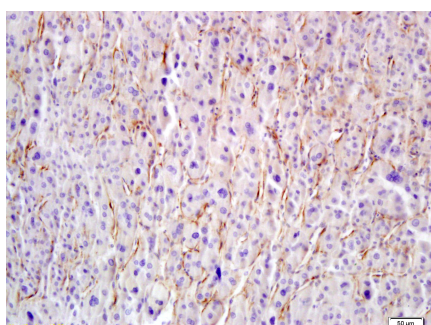
## Background

This product as supplied is intended for research use only, not for use in human, therapeutic or diagnostic applications.

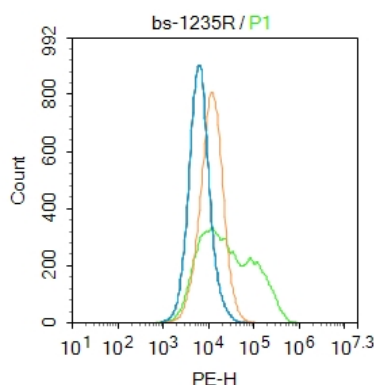
## Images



Tissue/cell: human colon carcinoma; 4%  
Paraformaldehyde-fixed and paraffin-embedded; Antigen retrieval: citrate buffer ( 0.01M, pH 6.0 ), Boiling bathing for 15min; Block endogenous peroxidase by 3% Hydrogen peroxide for 30min; Blocking buffer (normal goat serum,C-0005) at 37°C for 20 min; Incubation: Anti-Hyaluronidase-1 Polyclonal Antibody, Unconjugated(AP94300) 1:300, overnight at 4°C, followed by conjugation to the secondary antibody(SP-0023) and DAB(C-0010) staining



Tissue/cell: human liver carcinoma; 4%  
Paraformaldehyde-fixed and paraffin-embedded; Antigen retrieval: citrate buffer ( 0.01M, pH 6.0 ), Boiling bathing for 15min; Block endogenous peroxidase by 3% Hydrogen peroxide for 30min; Blocking buffer (normal goat serum,C-0005) at 37°C for 20 min; Incubation: Anti-Hyaluronidase-1 Polyclonal Antibody, Unconjugated(AP94300) 1:300, overnight at 4°C, followed by conjugation to the secondary antibody(SP-0023) and DAB(C-0010) staining



Blank control:HeLa. Primary Antibody (green line): Rabbit Anti-Hyaluronidase-1 antibody (AP94300) Dilution: 2  $\mu$ g /10<sup>6</sup> cells; Isotype Control Antibody (orange line): Rabbit IgG . Secondary Antibody : Goat anti-rabbit IgG-PE Dilution: 2  $\mu$ g /test. Protocol The cells were fixed with 4% PFA (10min at room temperature)and then permeabilized with PBST for 20 min at room temperature. The cells were then incubated in 5%BSA to block non-specific protein-protein interactions for 30 min at room temperature .Cells stained with Primary Antibody for 30 min at room temperature. The secondary antibody used for 40 min at room temperature. Acquisition of 20,000 events was performed.

Please note: All products are 'FOR RESEARCH USE ONLY. NOT FOR USE IN DIAGNOSTIC OR THERAPEUTIC PROCEDURES'.