

Zinc finger protein 754 Rabbit pAb

Zinc finger protein 754 Rabbit pAb

Catalog # AP94273

Product Information

Application	WB
Reactivity	Human
Host	Rabbit
Clonality	Polyclonal
Calculated MW	35 KDa
Physical State	Liquid
Immunogen	KLH conjugated synthetic peptide derived from human Rex1/Zinc finger protein 754
Epitope Specificity	191-290/310
Isotype	IgG
Purity	affinity purified by Protein A
Buffer	0.01M TBS (pH7.4) with 1% BSA, 0.02% Proclin300 and 50% Glycerol.
SUBCELLULAR LOCATION	Nucleus.
SIMILARITY	Belongs to the krueppel C2H2-type zinc-finger protein family. Contains 4 C2H2-type zinc fingers.
Post-translational modifications	Polyubiquitinated by RNF12, leading to proteasomal degradation
Important Note	This product as supplied is intended for research use only, not for use in human, therapeutic or diagnostic applications.
Background Descriptions	Involved in self-renewal property of ES cells (By similarity). May be involved in transcriptional regulation. Tissue specificity : Expressed in kidney, epidermal keratinocytes, prostate epithelial cells, bronchial and small airway lung epithelial cells (at protein level). Expressed in malignant kidney and several carcinoma cell lines (at protein level). Expressed in embryonic stem cells, kidney, epidermal keratinocytes, prostate epithelial cells, bronchial and small airway lung epithelial cells. Expressed in embryonal carcinomas, seminomas, malignant kidney and several carcinoma cell lines.

Additional Information

Target/Specificity	Expressed in kidney, epidermal keratinocytes, prostate epithelial cells, bronchial and small airway lung epithelial cells (at protein level). Expressed in malignant kidney and several carcinoma cell lines (at protein level). Expressed in embryonic stem cells, kidney, epidermal keratinocytes, prostate epithelial cells, bronchial and small airway lung epithelial cells. Expressed in embryonal carcinomas, seminomas, malignant kidney and several carcinoma cell lines.
Dilution	WB=1:500-2000
Format	0.01M TBS(pH7.4) with 1% BSA, 0.09% (W/V) sodium azide and 50% Glyce

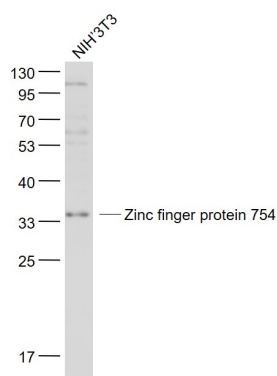
Storage

Store at -20 °C for one year. Avoid repeated freeze/thaw cycles. When reconstituted in sterile pH 7.4 0.01M PBS or diluent of antibody the antibody is stable for at least two weeks at 2-4 °C.

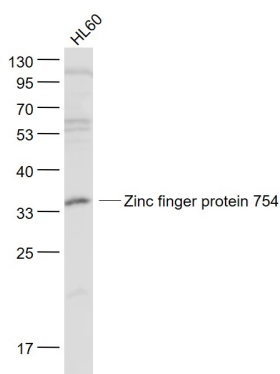
Background

This product as supplied is intended for research use only, not for use in human, therapeutic or diagnostic applications.

Images



Sample: NIH/3T3(Mouse) Cell Lysate at 30 ug Primary: Anti- Zinc finger protein 754 (AP94273) at 1/1000 dilution
Secondary: IRDye800CW Goat Anti-Rabbit IgG at 1/20000 dilution Predicted band size: 35 kD Observed band size: 35 kD



Sample: HL60(Human) Cell Lysate at 30 ug Primary: Anti- Zinc finger protein 754 (AP94273) at 1/1000 dilution
Secondary: IRDye800CW Goat Anti-Rabbit IgG at 1/20000 dilution Predicted band size: 35 kD Observed band size: 35 kD

Please note: All products are 'FOR RESEARCH USE ONLY. NOT FOR USE IN DIAGNOSTIC OR THERAPEUTIC PROCEDURES'.