

HPV33 E7 Rabbit pAb

HPV33 E7 Rabbit pAb

Catalog # AP94266

Product Information

Application	IHC-P, IHC-F, IF
Host	Rabbit
Clonality	Polyclonal
Calculated MW	11 KDa
Physical State	Liquid
Immunogen	KLH conjugated synthetic peptide derived from HPV33 E7
Epitope Specificity	41-97/97
Isotype	IgG
Purity	affinity purified by Protein A
Buffer	0.01M TBS (pH7.4) with 1% BSA, 0.02% Proclin300 and 50% Glycerol.
Important Note	This product as supplied is intended for research use only, not for use in human, therapeutic or diagnostic applications.

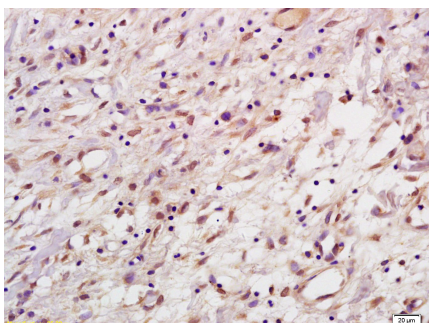
Additional Information

Dilution	IHC-P=1:100-500,IHC-F=1:100-500,IF=1:100-500
Format	0.01M TBS(pH7.4) with 1% BSA, 0.09% (W/V) sodium azide and 50% Glyce
Storage	Store at -20 °C for one year. Avoid repeated freeze/thaw cycles. When reconstituted in sterile pH 7.4 0.01M PBS or diluent of antibody the antibody is stable for at least two weeks at 2-4 °C.

Background

This product as supplied is intended for research use only, not for use in human, therapeutic or diagnostic applications.

Images



Tissue/cell: Human gastric cancer; 4%
Paraformaldehyde-fixed and paraffin-embedded; Antigen retrieval: citrate buffer (0.01M, pH 6.0), Boiling bathing for 15min; Block endogenous peroxidase by 3% Hydrogen peroxide for 30min; Blocking buffer (normal goat serum,C-0005) at 37°C for 20 min; Incubation:Anti-HPV33 E7 Polyclonal Antibody, Unconjugated(AP94266) 1:200, overnight at 4°C, followed by conjugation to the secondary antibody(SP-0023) and DAB(C-0010) staining

Please note: All products are 'FOR RESEARCH USE ONLY. NOT FOR USE IN DIAGNOSTIC OR THERAPEUTIC PROCEDURES'.