

UQCRC2 Recombinant Mouse mAb

UQCRC2 Recombinant Mouse mAb

Catalog # AP94261

Product Information

Application	WB, IHC-P, IHC-F, IF
Host	Rabbit
Clonality	Recombinant
Physical State	Liquid
Isotype	IgG
Purity	affinity purified by Protein G
Buffer	0.01M TBS (pH7.4) with 1% BSA, 0.02% Proclin300 and 50% Glycerol.
SUBCELLULAR LOCATION	Mitochondrion inner membrane; Peripheral membrane protein; Matrix side.
SIMILARITY	Belongs to the peptidase M16 family. UQCRC2/QCR2 subfamily.
SUBUNIT	The bc1 complex contains 11 subunits: 3 respiratory subunits (cytochrome b, cytochrome c1 and Rieske/UQCRFS1), 2 core proteins (UQCRC1/QCR1 and UQCRC2/QCR2) and 6 low-molecular weight proteins (UQCRH/QCR6, UQCRB/QCR7, UQCRQ/QCR8, UQCR10/QCR9, UQCR11/QCR10 and a cleavage product of Rieske/UQCRFS1).
Important Note	This product as supplied is intended for research use only, not for use in human, therapeutic or diagnostic applications.
Background Descriptions	UQCRC2 is a component of the ubiquinol cytochrome c reductase complex (complex III), which is part of the mitochondrial respiratory chain. The core protein 2 is required for the assembly of the complex.

Additional Information

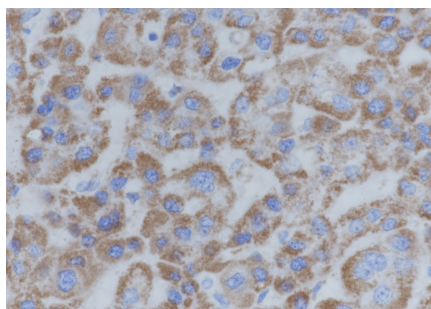
Dilution	WB=1:500-1:2000,IHC-P=1:50-200,IHC-F=1:100-500,IF=0
Format	0.01M TBS(pH7.4) with 1% BSA, 0.09% (W/V) sodium azide and 50% Glyce
Storage	Store at -20 °C for one year. Avoid repeated freeze/thaw cycles. When reconstituted in sterile pH 7.4 0.01M PBS or diluent of antibody the antibody is stable for at least two weeks at 2-4 °C.

Background

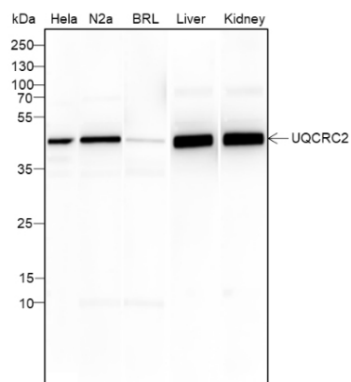
This product as supplied is intended for research use only, not for use in human, therapeutic or diagnostic applications.

Images

Tissue: Human hepatocellular carcinoma Section type:
Formalin fixed & Paraffin -embedded section Retrieval



method: High temperature and high pressure Retrieval
buffer: Tris/EDTA buffer, pH 9.0 Primary ab dilution: 1:100
Primary ab incubation condition: 1 hour at room
temperature Counter stain: Hematoxylin Comment: Color
brown is the positive signal for AP94261



Blocking buffer: 5% NFDm/TBST Primary ab dilution:
1:2000 Primary ab incubation condition: 2 hours at room
temperature Lysate: HeLa, N2a, BRL, mouse liver, mouse
kidney Protein loading quantity: 20 µg Exposure time: 30
s Predicted MW: 48 kDa Observed MW: 48 kDa

Please note: All products are 'FOR RESEARCH USE ONLY. NOT FOR USE IN DIAGNOSTIC OR THERAPEUTIC PROCEDURES'.