

SUV39H2 Recombinant Rabbit mAb

SUV39H2 Recombinant Rabbit mAb

Catalog # AP94254

Product Information

Application	WB
Host	Rabbit
Clonality	Recombinant
Physical State	Liquid
Isotype	IgG
Purity	affinity purified by Protein A
Buffer	0.01M TBS (pH7.4) with 1% BSA, 0.02% Proclin300 and 50% Glycerol.
SUBCELLULAR LOCATION	Nucleus. Chromosome > centromere. Associates with centromeric constitutive heterochromatin.
SIMILARITY	Belongs to the histone-lysine methyltransferase family. Suvar3-9 subfamily. Contains 1 chromo domain. Contains 1 post-SET domain. Contains 1 pre-SET domain. Contains 1 SET domain.
Important Note	This product as supplied is intended for research use only, not for use in human, therapeutic or diagnostic applications.
Background Descriptions	Distinct modifications of histone tails, such as acetylation, phosphorylation and methylation, regulate nuclear processes by organizing chromatin into higher order structures. Higher order chromatin influences chromosome function and epigenetic gene regulation. SUV39H2 is a 410 amino acid protein that localizes to the centromere and contains one SET domain, one pre-SET domain, one post-SET domain and one chromo domain. Expressed at high levels in adult testis, SUV39H2 functions as a histone methyltransferase that trimethylates the Lys-9 residue of Histone H3, thereby playing an essential role in establishing constitutive heterochromatin at pericentric and telomere regions. SUV39H2 conveys its enzymatic activity via its multiple catalytic domains, which are necessary for both stable binding of SUV39H2 to chromatin and for SUV39H2 methyltransferase activity. Multiple isoforms of SUV39H2 exist due to alternative splicing events.

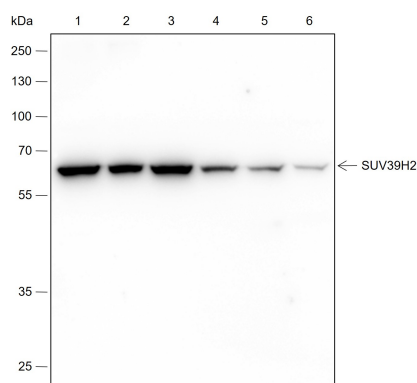
Additional Information

Dilution	WB=1:500-1:2000
Format	0.01M TBS(pH7.4) with 1% BSA, 0.09% (W/V) sodium azide and 50% Glyce
Storage	Store at -20 °C for one year. Avoid repeated freeze/thaw cycles. When reconstituted in sterile pH 7.4 0.01M PBS or diluent of antibody the antibody is stable for at least two weeks at 2-4 °C.

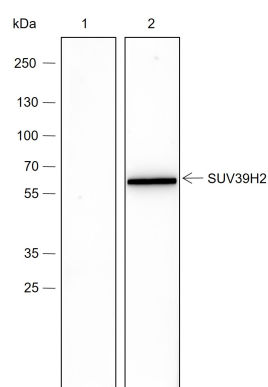
Background

This product as supplied is intended for research use only, not for use in human, therapeutic or diagnostic applications.

Images



Blocking buffer: 5% NFDM/TBST Primary ab dilution: 1:2000 Primary ab incubation condition: 2 hours at room temperature Secondary ab: Goat Anti-Rabbit IgG H&L (HRP) Lysate: 1: SHSY-5Y, 2: MOLT-4, 3: NIH-3T3, 4: C6, 5: Mouse testis, 6: Rat testis Protein loading quantity: 20 μ g Exposure time: 60 s Predicted MW: 47 kDa Observed MW: 65 kDa



Blocking buffer: 5% NFDM/TBST Primary ab dilution: 1:1000 Primary ab incubation condition: 2 hours at room temperature Secondary ab: Goat Anti-Rabbit IgG H&L (HRP) Lysate: 1: SHSY-5Y cell lysate, the SUV39H2 Rabbit mAb pre-adsorbed with 3 μ M of the synthetic peptides; 2: SHSY-5Y cell lysate, the SUV39H2 Rabbit mAb with no peptide blocking. Protein loading quantity: 20 μ g Exposure time: 30 s Predicted MW: 47 kDa Observed MW: 65 kDa

Please note: All products are 'FOR RESEARCH USE ONLY. NOT FOR USE IN DIAGNOSTIC OR THERAPEUTIC PROCEDURES'.