

SLC22A15 Rabbit pAb

SLC22A15 Rabbit pAb

Catalog # AP94241

Product Information

Application	WB
Primary Accession	Q8IZD5
Reactivity	Human
Host	Rabbit
Clonality	Polyclonal
Calculated MW	65 KDa
Physical State	Liquid
Immunogen	KLH conjugated synthetic peptide derived from human SLC22A15
Epitope Specificity	281-380/577
Isotype	IgG
Purity	affinity purified by Protein A
Buffer	Preservative: 0.02% Proclin300, Constituents: 1% BSA, 0.01M PBS, pH7.4.
SUBCELLULAR LOCATION	Membrane.
SIMILARITY	Belongs to the major facilitator superfamily. Organic cation transporter family.
Important Note	This product as supplied is intended for research use only, not for use in human, therapeutic or diagnostic applications.
Background Descriptions	Organic ion transporters, such as SLC22A15, transport various medically and physiologically important compounds, including pharmaceuticals, toxins, hormones, neurotransmitters, and cellular metabolites. These transporters are also referred to as amphiphilic solute facilitators (ASFs).[supplied by OMIM, Apr 2004]

Additional Information

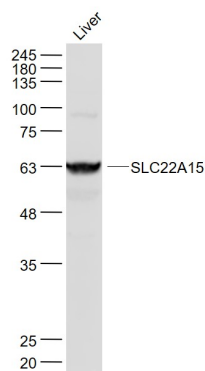
Target/Specificity	Expressed at highest levels in kidney and brain. Expressed at high levels in skeletal muscle, heart, liver, placenta and white blood cells. Expressed at moderate levels in lung and spleen. Expressed at low levels in thymus, small intestine and colon. Expressed in several intestinal tumor cell lines.
Dilution	WB=1:500-2000
Format	0.01M TBS(pH7.4) with 1% BSA, 0.09% (W/V) sodium azide and 50% Glyce
Storage	Store at -20 °C for one year. Avoid repeated freeze/thaw cycles. When reconstituted in sterile pH 7.4 0.01M PBS or diluent of antibody the antibody is stable for at least two weeks at 2-4 °C.

Protein Information

Background

This product as supplied is intended for research use only, not for use in human, therapeutic or diagnostic applications.

Images



Sample: Liver (Mouse) Lysate at 40 ug Primary: Anti-SLC22A15 (AP94241) at 1/1000 dilution Secondary: IRDye800CW Goat Anti-Rabbit IgG at 1/20000 dilution
Predicted band size: 65 kD Observed band size: 63 kD

Please note: All products are 'FOR RESEARCH USE ONLY. NOT FOR USE IN DIAGNOSTIC OR THERAPEUTIC PROCEDURES'.