

phospho-REC8 (Ser251) Rabbit pAb

phospho-REC8 (Ser251) Rabbit pAb

Catalog # AP94238

Product Information

| | |
|--------------------------------|--|
| Application | WB |
| Primary Accession | Q8C5S7 |
| Reactivity | Mouse |
| Host | Rabbit |
| Clonality | Polyclonal |
| Calculated MW | 67425 |
| Physical State | Liquid |
| Immunogen | KLH conjugated synthesised phosphopeptide derived from mouse REC8 around the phosphorylation site of Ser251 |
| Epitope Specificity | RA(p-S)LP |
| Isotype | IgG |
| Purity | affinity purified by Protein A |
| Buffer | 0.01M TBS (pH7.4) with 1% BSA, 0.02% Proclin300 and 50% Glycerol. |
| SUBCELLULAR LOCATION | Nucleus. Chromosome. |
| SIMILARITY | Belongs to the rad21 family. |
| SUBUNIT | Interacts (phosphorylated and unphosphorylated form) with SMC3. Interacts with SYCP3. Interacts (phosphorylated and unphosphorylated form) with SMC1B. Does not interact with SMC1A. Interacts with RAD51. |
| Important Note | This product as supplied is intended for research use only, not for use in human, therapeutic or diagnostic applications. |
| Background Descriptions | Required during meiosis for separation of sister chromatids and homologous chromosomes. Proteolytic cleavage of REC8 on chromosome arms by separin during anaphase I allows for homologous chromosome separation in meiosis I and cleavage of REC8 on centromeres during anaphase II allows for sister chromatid separation in meiosis II. |

Additional Information

| | |
|---------------------------|---|
| Gene ID | 56739 |
| Other Names | Meiotic recombination protein REC8 homolog, Cohesin Rec8p, Rec8, Mei8, Rec8L1 |
| Target/Specificity | Expressed in testis and thymus. |
| Dilution | WB=1:500-2000 |
| Format | 0.01M TBS(pH7.4) with 1% BSA, 0.09% (W/V) sodium azide and 50% Glyce |
| Storage | Store at -20 °C for one year. Avoid repeated freeze/thaw cycles. When reconstituted in sterile pH 7.4 0.01M PBS or diluent of antibody the antibody |

is stable for at least two weeks at 2-4 °C.

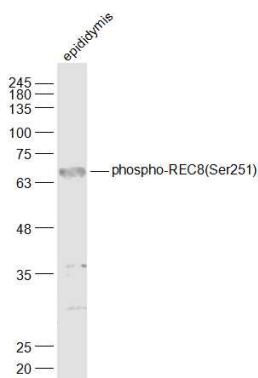
Protein Information

| | |
|--------------------------|---|
| Name | Rec8 |
| Synonyms | Mei8, Rec8L1 |
| Function | Required during meiosis for separation of sister chromatids and homologous chromosomes. Proteolytic cleavage of REC8 on chromosome arms by separin during anaphase I allows for homologous chromosome separation in meiosis I and cleavage of REC8 on centromeres during anaphase II allows for sister chromatid separation in meiosis II. |
| Cellular Location | Nucleus. Chromosome. Chromosome, centromere. Note=In meiotic chromosomes, localized along axial elements in prophase from the leptotene to diplotene stages. At later prophase stages, diakinesis and metaphase I, localized along interstitial axes of chromosomes including both centromere and arm regions. No longer detected in arm regions in anaphase I but persists on centromere regions until metaphase II. |
| Tissue Location | Expressed primarily in the gonads. In the testis, expressed in pachytene spermatocytes and in spermatids. Not expressed in spermatogonia or somatic cells. In the ovary, expressed only in oocytes. Low levels also detected in a number of somatic tissues including thymus, lung, liver, kidney and small intestine |

Background

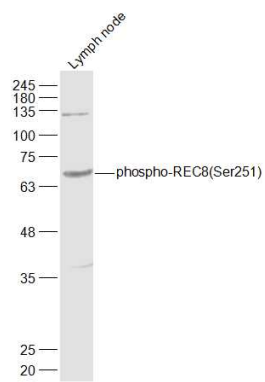
This product as supplied is intended for research use only, not for use in human, therapeutic or diagnostic applications.

Images



Sample: Epididymis (Mouse) Lysate at 40 ug Primary: Anti-phospho-REC8(Ser251) (AP94238) at 1/1000 dilution Secondary: IRDye800CW Goat Anti-Rabbit IgG at 1/20000 dilution Predicted band size: 67 kD Observed band size: 67 kD

Sample: Lymph node (Mouse) Lysate at 40 ug Primary: Anti-phospho-REC8(Ser251) (AP94238) at 1/1000 dilution Secondary: IRDye800CW Goat Anti-Rabbit IgG at 1/20000 dilution Predicted band size: 67 kD Observed band size: 67 kD



Please note: All products are 'FOR RESEARCH USE ONLY. NOT FOR USE IN DIAGNOSTIC OR THERAPEUTIC PROCEDURES'.