

# Glu-Glu Tag Rabbit pAb

Glu-Glu Tag Rabbit pAb

Catalog # AP94236

## Product Information

---

<b>Application</b>	WB
<b>Host</b>	Rabbit
<b>Clonality</b>	Polyclonal
<b>Physical State</b>	Liquid
<b>Immunogen</b>	KLH conjugated Glu-Glu Tag
<b>Epitope Specificity</b>	EYMPME
<b>Isotype</b>	IgG
<b>Purity</b>	affinity purified by Protein A
<b>Buffer</b>	0.01M TBS (pH7.4) with 1% BSA, 0.02% Proclin300 and 50% Glycerol.
<b>Important Note</b>	This product as supplied is intended for research use only, not for use in human, therapeutic or diagnostic applications.
<b>Background Descriptions</b>	Glu-Glu Tag is a commonly used epitope tag engineered onto the N- or C-terminus of a protein of interest so that the tagged protein can be analyzed and visualized. Because of the small size of the epitope, it is unlikely to alter the activity of the cloned sequence.

## Additional Information

---

<b>Dilution</b>	WB=1:1000-5000
<b>Format</b>	0.01M TBS(pH7.4) with 1% BSA, 0.09% (W/V) sodium azide and 50% Glyce
<b>Storage</b>	Store at -20 °C for one year. Avoid repeated freeze/thaw cycles. When reconstituted in sterile pH 7.4 0.01M PBS or diluent of antibody the antibody is stable for at least two weeks at 2-4 °C.

## Background

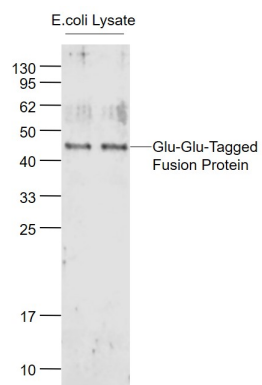
---

This product as supplied is intended for research use only, not for use in human, therapeutic or diagnostic applications.

## Images

---

Sample: Lane1: Glu-Glu-Tagged Fusion Protein  
Overexpression E.coli Lysate at 2ug Lane2:  
Glu-Glu-Tagged Fusion Protein Overexpression E.coli  
Lysate at 2ug Primary: Anti-Glu-Glu Tag (AP94236) at  
1/1000 dilution Secondary: IRDye800CW Goat Anti-Rabbit  
IgG at 1/20000 dilution Predicted band size: 41 kD



Observed band size: 45 kD

Please note: All products are 'FOR RESEARCH USE ONLY. NOT FOR USE IN DIAGNOSTIC OR THERAPEUTIC PROCEDURES'.