

DLL3 Recombinant Rabbit mAb

DLL3 Recombinant Rabbit mAb

Catalog # AP94234

Product Information

Application	WB
Host	Rabbit
Clonality	Recombinant
Physical State	Liquid
Isotype	IgG
Purity	affinity purified by Protein A
Buffer	0.01M TBS (pH7.4) with 1% BSA, 0.02% Proclin300 and 50% Glycerol.
SUBCELLULAR LOCATION	Membrane; Single-pass type I membrane protein (Probable).
SIMILARITY	Contains 1 DSL domain.Contains 6 EGF-like domains.
SUBUNIT	Can bind and activate Notch-1 or another Notch receptor (Probable).
Post-translational modifications	Ubiquitinated by MIB (MIB1 or MIB2), leading to its endocytosis and subsequent degradation.
DISEASE	Note=A truncating mutation in Dll3 is the cause of the pudgy (pu) phenotype. Pudgy mice exhibit patterning defects at the earliest stages of somitogenesis. Adult pudgy mice present severe vertebral and rib deformities.
Important Note	This product as supplied is intended for research use only, not for use in human, therapeutic or diagnostic applications.
Background Descriptions	Delta-like 3 (DLL3) is a transmembrane Delta-like protein that inhibits primary neurogenesis. It may be required to divert neurons along a specific differentiation pathway and plays a role in the formation of somite boundaries during segmentation of the paraxial mesoderm. DLL3 is one of five DSL proteins that bind to the Notch receptor and activates Notch signaling.

Additional Information

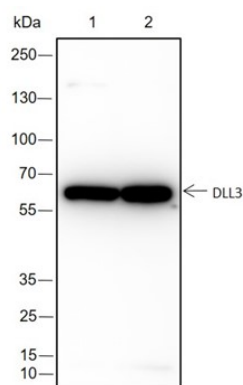
Target/Specificity	Predominantly expressed in the neuroectoderm and paraxial mesoderm during embryogenesis.
Dilution	WB=1:500-1:1000
Format	0.01M TBS(pH7.4) with 1% BSA, 0.09% (W/V) sodium azide and 50% Glyce
Storage	Store at -20 °C for one year. Avoid repeated freeze/thaw cycles. When reconstituted in sterile pH 7.4 0.01M PBS or diluent of antibody the antibody is stable for at least two weeks at 2-4 °C.

Background

This product as supplied is intended for research use only, not for use in human, therapeutic or diagnostic

applications.

Images



Blocking buffer: 5% NFDM/TBST Primary ab dilution: 1:1000 Primary ab incubation condition: 2 hours at room temperature Secondary ab: Goat Anti-Rabbit IgG H&L (HRP) Lysate: 1: TT, 2: A375 Protein loading quantity: 20 μ g Exposure time: 60 s Predicted MW: 65 kDa Observed MW: 65 kDa

Please note: All products are 'FOR RESEARCH USE ONLY. NOT FOR USE IN DIAGNOSTIC OR THERAPEUTIC PROCEDURES'.