

# PROCR/CD201 Recombinant Rat mAb

PROCR/CD201 Recombinant Rat mAb

Catalog # AP94230

## Product Information

---

<b>Host</b>	Rabbit
<b>Clonality</b>	Recombinant
<b>Calculated MW</b>	25 KDa
<b>Physical State</b>	Liquid
<b>Isotype</b>	IgG1, Kappa
<b>Purity</b>	affinity purified by Protein A
<b>Buffer</b>	0.01M TBS (pH7.4) with 1% BSA, 0.02% Proclin300 and 50% Glycerol.
<b>SUBCELLULAR LOCATION</b>	Membrane; Single-pass type I membrane protein.
<b>Post-translational modifications</b>	N-glycosylated. A soluble form exists; probably released by a metalloprotease. Seems to have the same activity as the membrane-bound form.
<b>Important Note</b>	This product as supplied is intended for research use only, not for use in human, therapeutic or diagnostic applications.
<b>Background Descriptions</b>	The protein encoded by this gene is a receptor for activated protein C, a serine protease activated by and involved in the blood coagulation pathway. The encoded protein is an N-glycosylated type I membrane protein that enhances the activation of protein C. Mutations in this gene have been associated with venous thromboembolism and myocardial infarction, as well as with late fetal loss during pregnancy. The encoded protein may also play a role in malarial infection and has been associated with cancer. [provided by RefSeq, Jul 2013]

## Additional Information

---

<b>Target/Specificity</b>	Expressed strongly in the endothelial cells of arteries and veins in heart and lung, less intensely in capillaries in the lung and skin, and not at all in the endothelium of small vessels of the liver and kidney.
<b>Dilution</b>	Flow-Cyt=1:50-1:100
<b>Format</b>	0.01M TBS(pH7.4) with 1% BSA, 0.09% (W/V) sodium azide and 50% Glyce
<b>Storage</b>	Store at -20 °C for one year. Avoid repeated freeze/thaw cycles. When reconstituted in sterile pH 7.4 0.01M PBS or diluent of antibody the antibody is stable for at least two weeks at 2-4 °C.

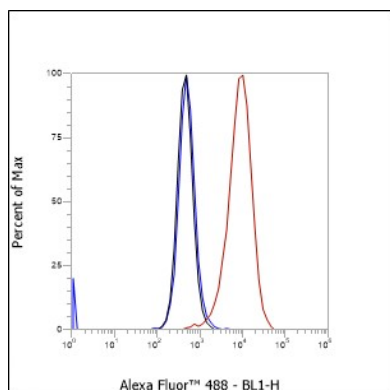
## Background

---

This product as supplied is intended for research use only, not for use in human, therapeutic or diagnostic applications.

## Images

---



Cell line: HUVEC Fixative: Unfixed Permeabilization: None  
Primary Ab dilution: 1:100 Secondary Ab: Goat anti Rat  
IgG Unlabelled control: The cell without incubation with  
primary antibody and secondary antibody (Black line).  
Isotype control: Rat monoclonal IgG1 (Blue line).  
Comment: Line red is the positive signal for bs-60546R

Please note: All products are 'FOR RESEARCH USE ONLY. NOT FOR USE IN DIAGNOSTIC OR THERAPEUTIC PROCEDURES'.