

# SLC15A3 Rabbit pAb

SLC15A3 Rabbit pAb

Catalog # AP94227

## Product Information

---

<b>Reactivity</b>	Human
<b>Host</b>	Rabbit
<b>Clonality</b>	Polyclonal
<b>Calculated MW</b>	64 KDa
<b>Physical State</b>	Liquid
<b>Immunogen</b>	KLH conjugated synthetic peptide derived from human SLC15A3
<b>Epitope Specificity</b>	431-530/581
<b>Isotype</b>	IgG
<b>Purity</b>	affinity purified by Protein A
<b>Buffer</b>	Preservative: 0.02% Proclin300, Constituents: 1% BSA, 0.01M PBS, pH7.4.
<b>SUBCELLULAR LOCATION</b>	Lysosome membrane.
<b>SIMILARITY</b>	Belongs to the PTR2/POT transporter (TC 2.A.17) family.
<b>Important Note</b>	This product as supplied is intended for research use only, not for use in human, therapeutic or diagnostic applications.
<b>Background Descriptions</b>	SLC15A3 (Solute Carrier Family 15 Member 3) is a Protein Coding gene. Diseases associated with SLC15A3 include Diabetes Mellitus, Permanent Neonatal. Among its related pathways are Transport of glucose and other sugars, bile salts and organic acids, metal ions and amine compounds. Gene Ontology (GO) annotations related to this gene include transporter activity and symporter activity. An important paralog of this gene is SLC15A4.

## Additional Information

---

<b>Dilution</b>	Flow-Cyt=1 µg/Test
<b>Format</b>	0.01M TBS(pH7.4) with 1% BSA, 0.09% (W/V) sodium azide and 50% Glyce
<b>Storage</b>	Store at -20 °C for one year. Avoid repeated freeze/thaw cycles. When reconstituted in sterile pH 7.4 0.01M PBS or diluent of antibody the antibody is stable for at least two weeks at 2-4 °C.

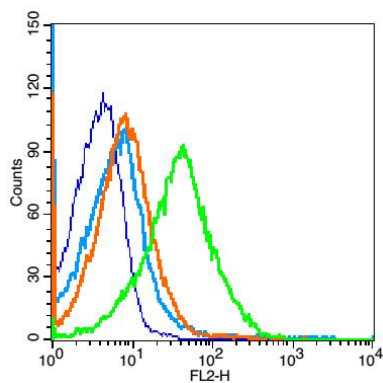
## Background

---

This product as supplied is intended for research use only, not for use in human, therapeutic or diagnostic applications.

## Images

---



Blank control:U937 (fixed with 2% paraformaldehyde (10 min)). Primary Antibody:Rabbit Anti-SLC15A3 antibody(AP94227), Dilution: 1  $\mu$ g in 100  $\mu$ L 1X PBS containing 0.5% BSA; Isotype Control Antibody: Rabbit IgG(orange) ,used under the same conditions ); Secondary Antibody: Goat anti-rabbit IgG-PE(white blue), Dilution: 1:200 in 1 X PBS containing 0.5% BSA.

Please note: All products are 'FOR RESEARCH USE ONLY. NOT FOR USE IN DIAGNOSTIC OR THERAPEUTIC PROCEDURES'.