

# SH2D7 Rabbit pAb

SH2D7 Rabbit pAb  
Catalog # AP94226

## Product Information

---

<b>Application</b>	IHC-P, IHC-F, IF
<b>Primary Accession</b>	<a href="#">A6NKC9</a>
<b>Reactivity</b>	Human
<b>Host</b>	Rabbit
<b>Clonality</b>	Polyclonal
<b>Calculated MW</b>	49807
<b>Physical State</b>	Liquid
<b>Immunogen</b>	KLH conjugated synthetic peptide derived from human SH2D7
<b>Epitope Specificity</b>	181-280/451
<b>Isotype</b>	IgG
<b>Purity</b>	affinity purified by Protein A
<b>Buffer</b>	Preservative: 0.02% Proclin300, Constituents: 1% BSA, 0.01M PBS, pH7.4.
<b>SUBUNIT</b>	Contains 1 SH2 domain.
<b>Important Note</b>	This product as supplied is intended for research use only, not for use in human, therapeutic or diagnostic applications.
<b>Background Descriptions</b>	SH2D7 (SH2 Domain Containing 7) is a Protein Coding gene. An important paralog of this gene is SH2D2A.

## Additional Information

---

<b>Gene ID</b>	646892
<b>Other Names</b>	SH2 domain-containing protein 7, SH2D7
<b>Dilution</b>	IHC-P=1:100-500,IHC-F=1:100-500,IF=1:100-500
<b>Format</b>	0.01M TBS(pH7.4) with 1% BSA, 0.09% (W/V) sodium azide and 50% Glyce
<b>Storage</b>	Store at -20 °C for one year. Avoid repeated freeze/thaw cycles. When reconstituted in sterile pH 7.4 0.01M PBS or diluent of antibody the antibody is stable for at least two weeks at 2-4 °C.

## Protein Information

---

<b>Name</b>	SH2D7
-------------	-------

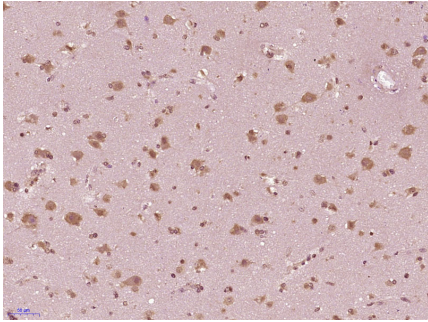
## Background

---

This product as supplied is intended for research use only, not for use in human, therapeutic or diagnostic applications.

## Images

---



Paraformaldehyde-fixed, paraffin embedded (Human brain glioma); Antigen retrieval by boiling in sodium citrate buffer (pH6.0) for 15min; Block endogenous peroxidase by 3% hydrogen peroxide for 20 minutes; Blocking buffer (normal goat serum) at 37°C for 30min; Antibody incubation with (SH2D7) Polyclonal Antibody, Unconjugated (AP94226) at 1:400 overnight at 4°C, followed by operating according to SP Kit(Rabbit) (sp-0023) instructions and DAB staining.

Please note: All products are 'FOR RESEARCH USE ONLY. NOT FOR USE IN DIAGNOSTIC OR THERAPEUTIC PROCEDURES'.