

mouse Ly-6C Rat mAb

mouse Ly-6C Rat mAb

Catalog # AP94224

Product Information

Application	IHC-P, IHC-F, IF
Host	Rabbit
Clonality	Monoclonal
Calculated MW	14 KDa
Physical State	Liquid
Isotype	Rat IgG2c, k
Purity	affinity purified by Protein G
Buffer	0.01M TBS (pH7.4).
Important Note	This product as supplied is intended for research use only, not for use in human, therapeutic or diagnostic applications.
Background Descriptions	Predicted to enable acetylcholine receptor binding activity and acetylcholine receptor inhibitor activity. Predicted to be involved in acetylcholine receptor signaling pathway. Located in cell surface. Orthologous to human LY6H (lymphocyte antigen 6 family member H). [provided by Alliance of Genome Resources, Apr 2022]

Additional Information

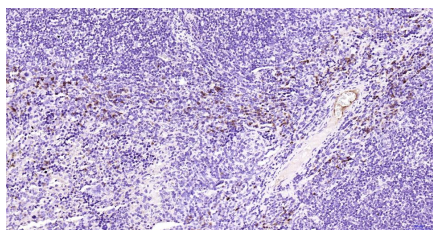
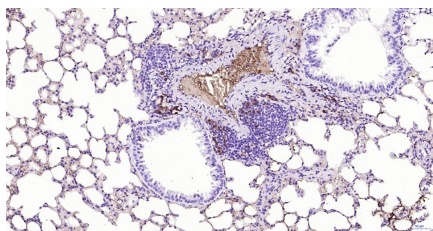
Dilution	IHC-P=1:100-500,IHC-F=1:100-500,IF=1:100-500
Format	0.01M TBS(pH7.4) with 1% BSA, 0.09% (W/V) sodium azide and 50% Glyce
Storage	Store at -20 °C for one year. Avoid repeated freeze/thaw cycles. When reconstituted in sterile pH 7.4 0.01M PBS or diluent of antibody the antibody is stable for at least two weeks at 2-4 °C.

Background

This product as supplied is intended for research use only, not for use in human, therapeutic or diagnostic applications.

Images

Paraformaldehyde-fixed, paraffin embedded Mouse lung;
Antigen retrieval by boiling in sodium citrate buffer (pH6.0) for 15 min; Antibody incubation with Ly-6C Monoclonal Antibody, Unconjugated(AP94224) at 1:200 overnight at 4°C, followed by conjugation to the bs-0293G-HRP and DAB (C-0010) staining.



Paraformaldehyde-fixed, paraffin embedded Mouse spleen; Antigen retrieval by boiling in sodium citrate buffer (pH6.0) for 15 min; Antibody incubation with Ly-6C Monoclonal Antibody, Unconjugated(AP94224) at 1:200 overnight at 4°C, followed by conjugation to the bs-0293G-HRP and DAB (C-0010) staining.

Please note: All products are 'FOR RESEARCH USE ONLY. NOT FOR USE IN DIAGNOSTIC OR THERAPEUTIC PROCEDURES'.